

TS SEALS

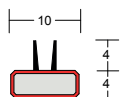
LP1004TS LP1504TS, LP2004TS, LP2504TS

35dB

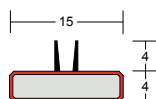
Our TS door seal with double elastomeric fins offers acoustic, smoke + fire protection, with the added benefit of thermal containment. Available in a choice of sizes to cover 30 and 60 minute applications, the TS seal also includes integral antimicrobial protection.



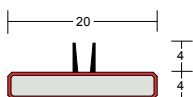
ACOUSTIC, SMOKE + FIRE SEALS



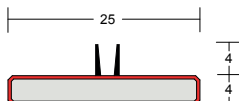
LP1004TS



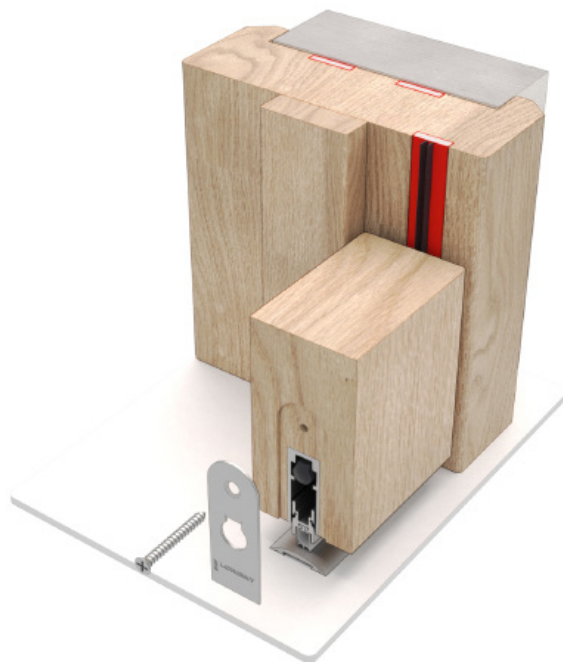
LP1504TS



LP2004TS



LP2504TS



TS seal (shown with LAS8001 si + LAS4001)

SYSTEM SPECIFICATIONS

Test evidence

- ▶ Acoustic: BS EN ISO 10140-2: 2010.
- ▶ Smoke: BS 476-31.1: 1983.
- ▶ Fire: BS EN 1634-1: 2008.
- ▶ Fire: BS 476-22: 1987.
- ▶ Durability: 100,000 cycles.

Performance

- ▶ Meets smoke requirements BS 9999:2017.
- ▶ Protects against sound, smoke, and fire.
- ▶ Thermal containment.
- ▶ Suitable for wheeled traffic.
- ▶ Exceptionally low frictional resistance for ease of door operation (Approved Document M).
- ▶ Integral antimicrobial protection.

Location

- ▶ Single and double leaf doors.

Size

- ▶ 10 x 4mm.
- ▶ 15 x 4mm.
- ▶ 20 x 4mm.
- ▶ 25 x 4mm.
- ▶ Other sizes available, please ask for details.

Use with

- ▶ Any architectural seals.

Seal material

- ▶ PVC encased sodium silicate and flexible elastomeric fins (4mm or 6mm).

Min/max gap size

- ▶ 3mm/4mm.

Fixing

- ▶ Heavy duty self-adhesive backing tape.

Standard lengths

- ▶ 1m and 2.1m.
- ▶ Other lengths to special order.

Finishes

- ▶ Available in a range of standard colours, plus woodgrain and metallic finishes for superior aesthetics.

Accreditations



(CF330 & CF341)