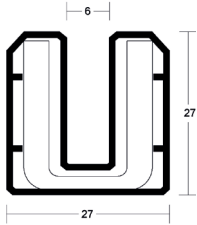


# SYSTEM-90 PLUS

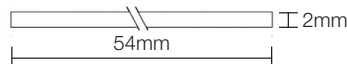
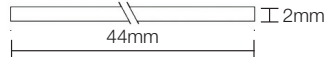
System-90 PLUS is designed for 60 minute fire resistant doors and screens. Comprises a U shaped PVC profile containing an intumescent core and liner. When using a suitable door and screen construction it provides 90 minute fire resistance. 120 minute fire resistance can only be attained when a suitable door construction is used.



FIRE RESISTANT GLAZING SYSTEMS

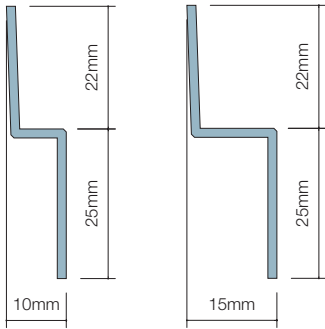
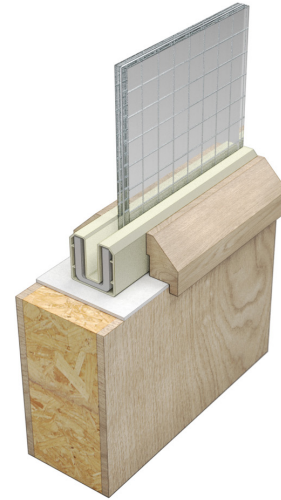


**System-90 PLUS**



**B24402 & B25402**

Sodium silicate intumescent liner



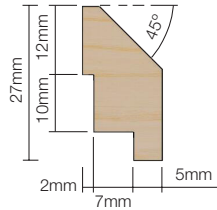
**LG4710**

For 44mm thick doors

Non-combustible beads for doors (90 and 120 minute applications).

**LG4715**

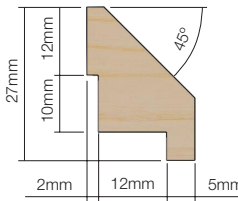
For 54mm thick doors



**LG2213**

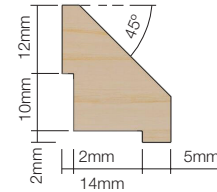
For 44mm thick doors

**Note:** Timber beads must be hardwood only (min density 650kg/m<sup>3</sup>) excluding Ash.



**LG2218**

For 54mm thick doors



**LG2220**

For unrebated screen frames

## SYSTEM SPECIFICATIONS

### Test evidence

- ▶ Fire: BS 476-22: 1987.

### Performance

- ▶ Provides 60 minutes fire resistance.
- ▶ For applications 90 minutes and above please contact our technical department.

### Size

- ▶ 27mm x 27mm.

### Standard lengths

- ▶ 1m, 1.25m and 2.1m.

### Seal material

- ▶ Sodium silicate intumescent within rigid PVC profile. Secondary sodium silicate intumescent material used as lining around the perimeter of the aperture.

### Application

- ▶ FD60 fire doors and screens.

### Finish

- ▶ Cream, white, grey, black, light brown, red, dark brown, silver, gold, bronze, maple as standard.
- ▶ Colour matching to special order.

### Glass thickness

- ▶ Suitable for use only with 6mm Georgian wired glass, Pyran-S® or 5mm Firelite®.

### Glass type

- ▶ Please refer to Certifire certificate CF185 for the full range of glass types.

### Intumescent liner

- ▶ 44mm door: B24402.
- ▶ 54mm door: B25402.
- ▶ Must be used with liner and beading to prevent erosion from under the system.

### Glazing beads

- ▶ Glazing beads are required on both sides of the glass.
- ▶ Note: Timber beads must be hardwood only (min density 650kg/m<sup>3</sup>) excluding ash.
- ▶ Fixing of beads: Screwed using No.8 x 45mm countersunk screws at 150mm nom. centres or metal beading through-bolted.
- ▶ Metal beading is not supplied with pre-drilled holes.

### Accreditation

