

RJ008 LETTERPLATE FITTING GUIDE

FD30


(CF5688)

CONTENTS

- Letterplate with pre-drilled holes
- 4 x 29mm bolts (44mm door)
- 4 x 44mm bolts (54mm door)
- 6 x Screws
- 2 x 15mm bolts with dry adhesive
- Fitting guide

TOOLS REQUIRED

- Tape measure
- Pencil or marker
- Saw (power/hack)
- Jigsaw
- Drill
- Screw driver
- Knife
- Router

STEP 1

Mark off the aperture position for the letterplate at a minimum of 250mm and a maximum of 1700mm from the base of the door. Dimension from the middle of the aperture.

STEP 2

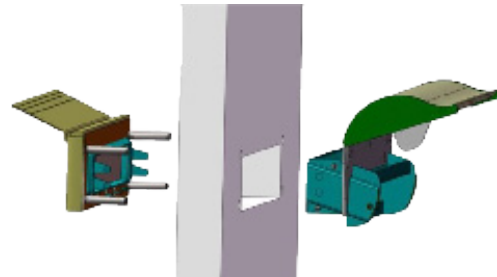
Mark the position for the aperture and holes for the securing posts following the dimensions of the door cutting instructions.

STEP 3

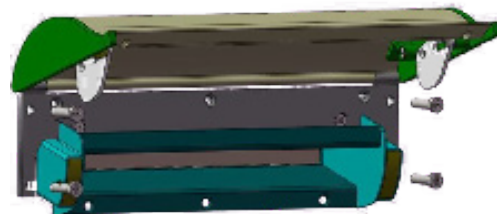
Cut out aperture with jigsaw or router etc.

STEP 4

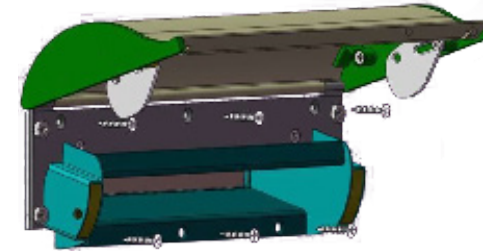
Position letterplate into the aperture, ensuring the curved profile is on the inside of the door.


STEP 5

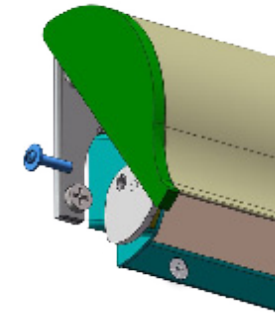
Secure the back plate to the door using 4 x 29mm bolts.


STEP 6

Securely fit the letterplate to the door by screwing in the six screws.


STEP 7

Secure the cowl by fixing the cam to the letterplate body using the 15mm bolts with ferrule.


PLEASE NOTE

The screw has a dry coated adhesive that is activated when threaded into the hole. The screw should not be removed once fitted.

IMPORTANT

The letterplates should be cleaned monthly with a moist cloth and not with any forms of cleaning agents.

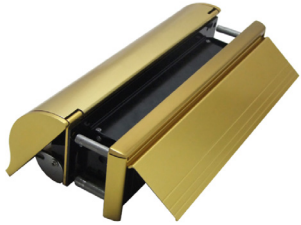
DISCLAIMER

Recommendations as to methods, use of materials and construction details are based on the experience and knowledge of Lorient and are given in good faith as a general guide and service to designers, contractors and manufacturers.

V2

**RJ008
LETTERPLATE
FITTING GUIDE**

FD30

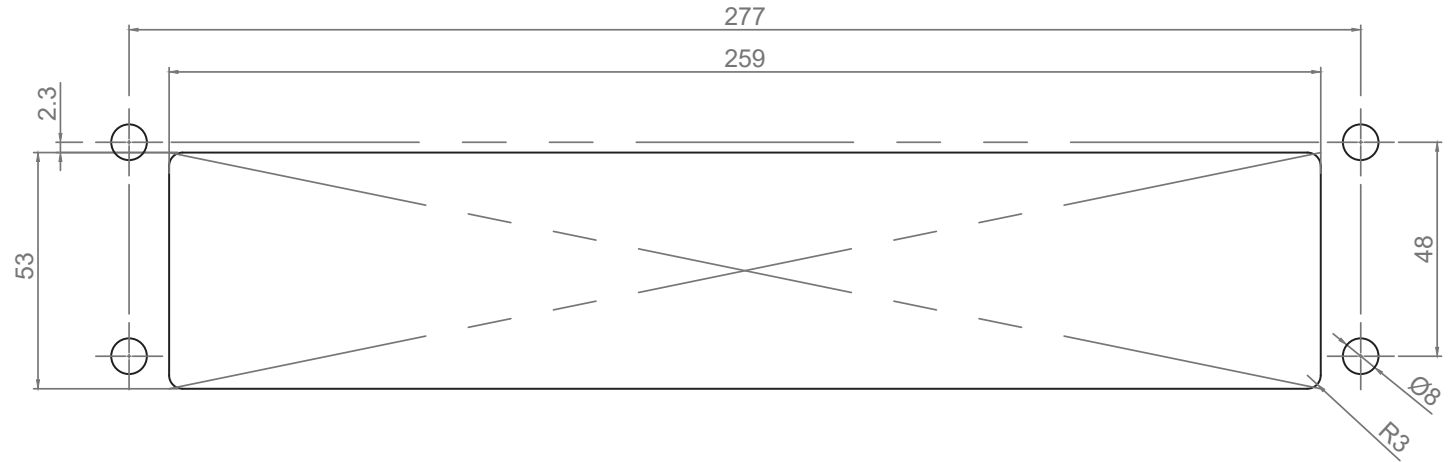
certifire
(CF5688)**CONTENTS**

- Letterplate with pre-drilled holes
- 4 x 29mm bolts (44mm door)
- 4 x 44mm bolts (54mm door)
- 6 x Screws
- 2 x 15mm bolts with dry adhesive
- Fitting guide

TOOLS REQUIRED

- Tape measure
- Pencil or marker
- Saw (power/hack)
- Jigsaw
- Drill
- Screw driver
- Knife
- Router

For more information please call:

+44 (0)1626 834252

V2



Lorient Polyproducts Ltd
Endeavour House
Fairfax Road
Heathfield Ind Estate
Newton Abbot
Devon TQ12 6UD
United Kingdom

+44 (0)1626 834252
www.lorientgroup.com

All rights reserved. No part of this fitting guide may be reproduced, stored in a retrieval system, or transmitted in any means, electronic, mechanical, photocopying, recording or otherwise without the written permission of Lorient Polyproducts Limited.
© Lorient Polyproducts Ltd 2021