

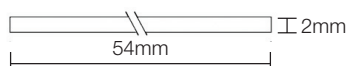
RF1™

BEAD APPLIED SYSTEM

RF1™ is a versatile bead-applied glazing system for 60 minute fire resistant doors and screens. Comprises a pair of bead applied intumescent glazing seals and an intumescent liner. With premium aesthetics, the caps are the only visible elements when fitted and a variety of colours are available to harmonise with the door.

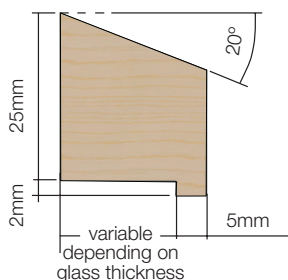


RF1

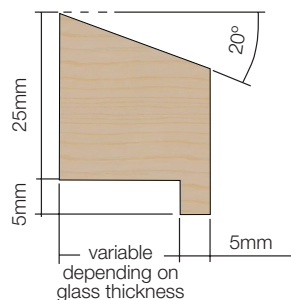


B25402

Sodium silicate intumescent liner.

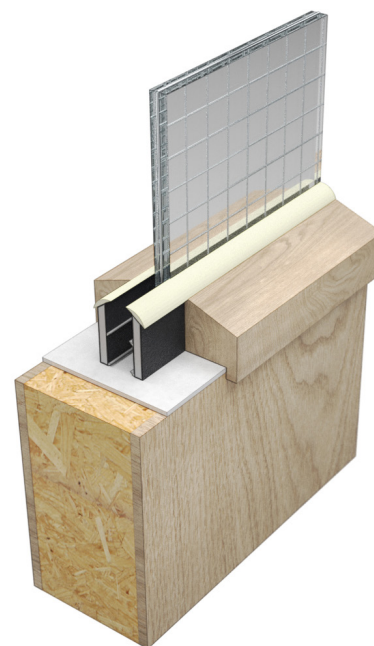


RG2704



RG2704

Note: The bead should be hardwood excluding Ash and Beech (min density 610 kg/m³).



SYSTEM SPECIFICATIONS

Test evidence

- Fire: BS 476-22: 1987.

Performance

- Provides 60 minutes fire resistance.

Size

- 24mm x 6.5mm.

Standard lengths

- 1 pack contains:
2 No. x RG2704 in 2.1m.
2 No. x B25402 in 1.050m.
minimum order quantity 10 packs.

Seal material

- Sodium silicate intumescent encapsulated in rigid PVC with flexible fins.

Finish

- Black profile with white, cream, grey, light brown, dark brown or black caps.

Glass thickness

- Suitable for use with a variety of fire rated glass types for both doors and screens.

Glass type

- Please refer to Certifire certificate CF5033 for the full range of glass types.

Application

- FD60 fire doors and screens.

Intumescent liner

- 54mm door: B25402.

Glazing beads

- Glazing beads are required on both sides of the glass.
- Note: Hardwood beads are available (min density 550kg/m³).
- Fixing of beads: pin or screw in to place using 50mm long steel pins at 150mm nom. centres, or steel screws 50mm long (No.8) at 150mm nom. centres.

Accreditation

