

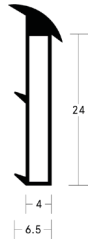
RF1™

BEAD APPLIED SYSTEM

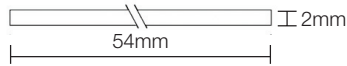
RF1™ is a versatile bead-applied glazing system for 60 minute fire resistant doors and screens. Comprises a pair of bead applied intumescent glazing seals and an intumescent liner. With premium aesthetics, the caps are the only visible elements when fitted and a variety of colours are available to harmonise with the door.



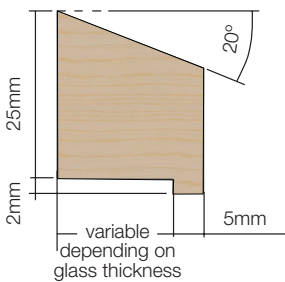
FIRE RESISTANT GLAZING SYSTEMS



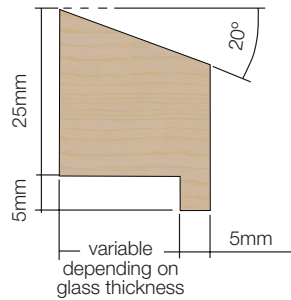
RF1



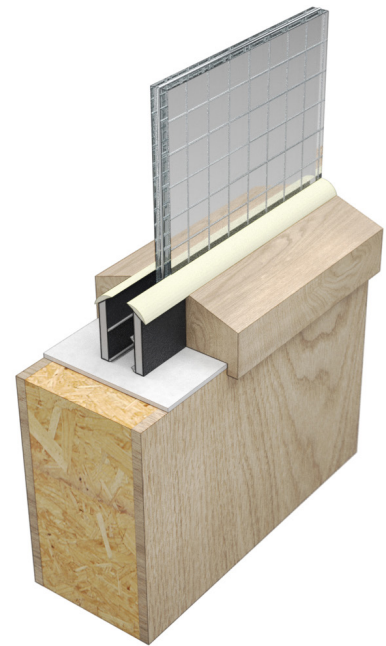
B25402
Sodium silicate intumescent liner.



RG2704



RG2704



Note: The bead should be hardwood excluding Ash and Beech (min density 610 kg/m³).

SYSTEM SPECIFICATIONS

Test evidence

- ▶ Fire: BS 476-22: 1987.

Performance

- ▶ Provides 60 minutes fire resistance.

Size

- ▶ 24mm x 6.5mm.

Standard lengths

- ▶ 1 pack contains:
2 No. x RG2704 in 2.1m.
2 No. x B25402 in 1.050m.
minimum order quantity 10 packs.

Seal material

- ▶ Sodium silicate intumescent encapsulated in rigid PVC with flexible fins.

Finish

- ▶ Black profile with white, cream, grey, light brown, dark brown or black caps.

Glass thickness

- ▶ Suitable for use with a variety of fire rated glass types for both doors and screens.

Glass type

- ▶ Please refer to Certifire certificate CF5033 for the full range of glass types.

Application

- ▶ FD60 fire doors and screens.

Intumescent liner

- ▶ 54mm door: B25402.

Glazing beads

- ▶ Glazing beads are required on both sides of the glass.
- ▶ Note: Hardwood beads are available (min density 550kg/m³).
- ▶ Fixing of beads: pin or screw in to place using 50mm long steel pins at 150mm nom. centres, or steel screws 50mm long (No.8) at 150mm nom. centres.

Accreditation

