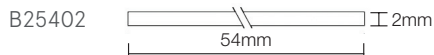


FITTING GUIDE



LORIENT SODIUM SILICATE LINER



Contains antimicrobial silver phosphate glass

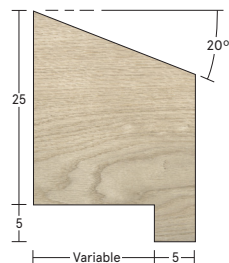
CONTENTS

- RF1™ glazing system
- Sodium silicate intumescent liner (B25402)

TOOLS

- 50mm pins or screws
- Mitre saw
- Screwdriver
- Drill & drill bit
- Hammer

BEAD DETAIL (not included)



For 54mm timber fire doors.

For more information please call:

+44 (0)1626 834252

INSTALLATION DETAIL

FOR TIMBER DOORS

STEP 1

Ensure the aperture is square cornered and true.

STEP 2

Apply the sodium silicate liner to the aperture, effectively reducing the size by 2mm all round.

STEP 3

Ensure the surface is free from dust and grease. Gradually remove the protective backing paper from the RF1™, and apply the glazing seal to the glazing bead. Press the exposed self-adhesive face of the seal onto the glazing edge of the bead – ensuring adequate pressure is applied to activate adhesive backing properties. The top “cap” of the seal should overlap the top edge of the bead.

NOTE

We do not recommend oil or solvent based paint/primers.

The bead should be hardwood (excluding Ash and Beech) and minimum density 610 kg/m³.

STEP 4

Mitre beads to the correct lengths for the size of the aperture, ensuring the cut lengths form a neat “push fit” finish.

If preferred, the bead can be mitred first, and then the RF1™ glazing seal applied to the bead as described in stage 1. If doing so, ensure the RF1™ is trimmed neatly to the end of the mitred corner.

STEP 5

Push the first set of bead lengths into position around the full periphery of the opening.

STEP 6

Securely pin or screw into place, using 50mm long steel pins at 150mm nom. centres, or steel screws 50mm long (No. 8) at 150mm nom. centres.

STEP 7

Working from the reverse side, press the aperture glass into position against the fixed bead.

STEP 8

Ensuring that the located glass is secure, particularly if working vertically, repeat stages 4 to 6 above. If correctly located, the glass should now be pinched between opposing beads and seal faces.



The bead dimension must be appropriate for the glass type and door core being used, and must relate to test evidence.

The expansion allowance should be as per the glass manufacturers certificates. As a general rule there should be a minimum gap of 4mm to each glass edge. Hardwood or non-combustible setting blocks may be used along the bottom edge only in order to facilitate this.

DISCLAIMER

Recommendations as to methods, use of materials and construction details are based on the experience and knowledge of Lorient and are given in good faith as a general guide and service to designers, contractors and manufacturers.

Lorient reserves the right to make alterations or delete any installation detail without prior notice.

V3



ASSA ABLOY LTD T/A LORIENT
Endeavour House
Fairfax Road
Heathfield Ind Estate
Newton Abbot
Devon TQ12 6UD
United Kingdom

+44 (0)1626 834252
www.lorientgroup.com

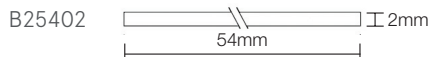
All rights reserved. No part of this fitting guide may be reproduced, stored in a retrieval system, or transmitted in any means, electronic, mechanical, photocopying, recording or otherwise without the written permission of Lorient.

© 2024 ASSA ABLOY Ltd T/A Lorient. Lorient is a registered trade mark of ASSA ABLOY LIMITED in England.

FITTING GUIDE



LORIENT SODIUM SILICATE LINER



Contains antimicrobial silver phosphate glass

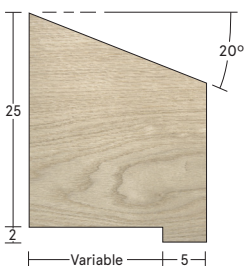
CONTENTS

- RF1™ glazing system
- Sodium silicate intumescent liner (B25402)

TOOLS

- 50mm pins or screws
- Mitre saw
- Screwdriver
- Drill & drill bit
- Hammer

BEAD DETAIL (not included)



For timber screens.

FOR TIMBER SCREENS

Ensure that any aperture has been properly formed, either by the original door manufacturer, or by one of their approved "aperture cutters or Licenced Processors".

The bead dimension must be appropriate for the glass type and screen or partition being used, and must relate to test evidence.

STEP 1

Ensure the aperture is square cornered and true.

STEP 2

Apply the sodium silicate liner to the aperture, effectively reducing the size by 2mm all round.

STEP 3

Ensure the surface is free from dust and grease. Gradually remove the protective backing paper from the RF1™, and apply the glazing bead. Press the exposed self-adhesive face of the seal onto the glazing edge of the bead – ensuring adequate pressure is applied to activate adhesive backing properties. The top "cap" of the seal should overlap the top edge of the bead.

NOTE

We do not recommend oil or solvent based paint/primers.

The bead should be hardwood (excluding Ash and Beech) and minimum density 610 kg/m³.

STEP 4

Mitre beads to the correct lengths for the size of the aperture, ensuring the cut lengths form a neat "push fit" finish.

If preferred, the bead can be mitred first, and then the RF1™ glazing seal applied to the bead as described in stage 1. If doing so, ensure the RF1™ is trimmed neatly to the end of the mitred corner.

STEP 5

Push the first set of bead lengths into position around the full periphery of the opening.

STEP 6

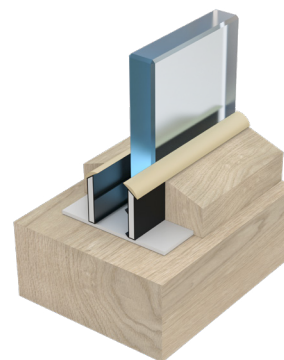
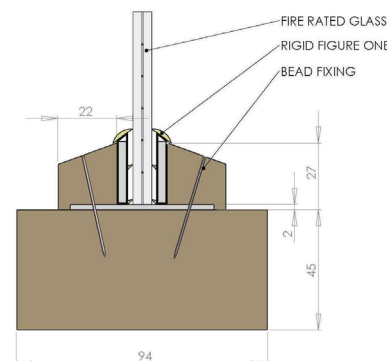
Securely pin or screw into place, using 50mm long steel pins at 150mm nom. centres, or steel screws 50mm long (No. 8) at 150mm nom. centres.

STEP 7

Working from the reverse side, press the aperture glass into position against the fixed bead.

STEP 8

Ensuring that the located glass is secure, particularly if working vertically, repeat stages 4 to 6 above. If correctly located, the glass should now be pinched between opposing beads and seal faces.



The expansion allowance should be as per the glass manufacturers certificates. As a general rule there should be a minimum gap of 4mm to each glass edge. Hardwood or non-combustible setting blocks may be used along the bottom edge only in order to facilitate this.

DISCLAIMER

Recommendations as to methods, use of materials and construction details are based on the experience and knowledge of Lorient and are given in good faith as a general guide and service to designers, contractors and manufacturers.

Lorient reserves the right to make alterations or delete any installation detail without prior notice.

V3



ASSA ABLOY LTD T/A LORIENT
Endeavour House
Fairfax Road
Heathfield Ind Estate
Newton Abbot
Devon TQ12 6UD
United Kingdom

+44 (0)1626 834252
www.lorientgroup.com

All rights reserved. No part of this fitting guide may be reproduced, stored in a retrieval system, or transmitted in any means, electronic, mechanical, photocopying, recording or otherwise without the written permission of Lorient.

© 2024 ASSA ABLOY Ltd T/A Lorient. Lorient is a registered trade mark of ASSA ABLOY LIMITED in England.

For more information please call:

+44 (0)1626 834252