



WALL 15

LVV40 FITTED INTO FIRE RATED FLEXIBLE WALLS

DESCRIPTION

1	Fire rated flexible wall (Group B/C)
2	Aperture lining
3	Air transfer grille fixing screws
4	Use intumescent sealant to bed LVV40 into wall
5	Pressed steel cover grille
6	LVV40 air transfer grille
7	Cover grille fixing screws into wall.

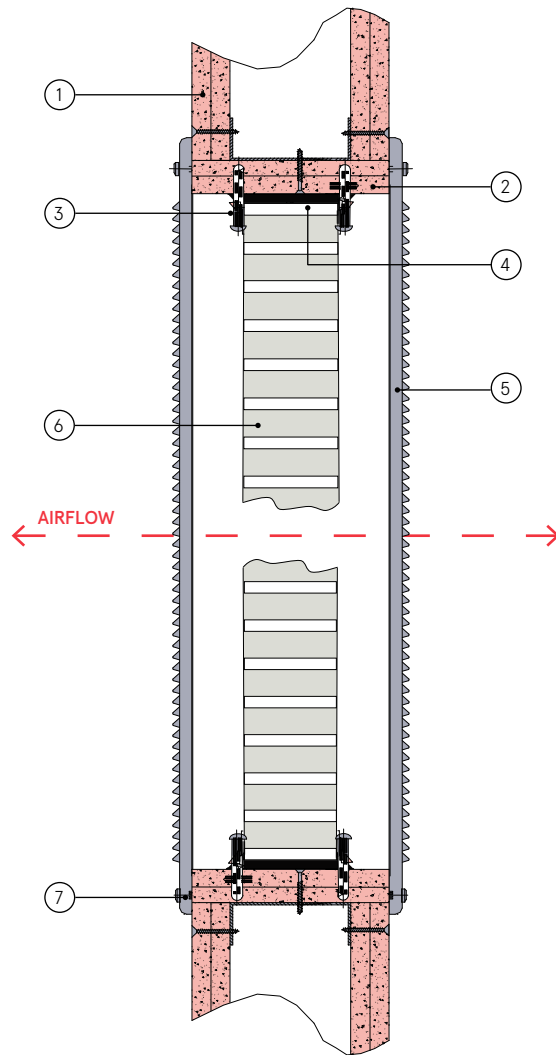
CONTENTS

- LVV40 air transfer grille
- Pressed steel cover grille

TOOLS REQUIRED

- Drywall screws (3.5 x 42mm)
- Lorient intumescent sealant

WALL MOUNTED SYSTEMS



Note: To achieve insulating rating, a cover grille must be fitted.

LVV40 fitted into FR flexible wall

EI60

Fire Resistance in accordance with

BS EN 1364-5:2017

Approval Ref

LBO-1333/19E

Max single cell size

600mm x 600mm

LVV40 air transfer grilles are supplied 2mm less than the nominal size e.g. a 300mm x 300mm is actually 298mm x 298mm.

INSTALLATION INSTRUCTIONS

- ▶ Cut the aperture to the required size with a maximum gap all around of 5mm. Frame in aperture faces. Ensure the final aperture is square and to correct size.
- ▶ Trial fit the LVV40 into the aperture and ensure that it can be positioned within the section of the wall, but not necessarily in the mid position, without jamming or twisting.
- ▶ Mark the position of drill points into wall either side of the LVV40.
- ▶ Remove the LVV40 from the wall aperture.
- ▶ Fix screws into wall with a minimum of 4 screws along the perimeter. For larger units use a minimum of 200mm between centres to provide up to 8 screws per side.
- ▶ Position LVV40 and repeat installation of screws on closest side of the LVV40.
- ▶ Bed in sealant around LVV40. Clean off surplus and ensure outer edge of the air transfer grille is fully sealed.
- ▶ Position pressed steel cover grille centrally over one face of the LVV40 and fix using drywall screws.
- ▶ Repeat to other face if two cover grilles are to be fitted.
- ▶ **Note: Fixings supplied by others.**