

# WALL 13

## LVV40 FITTED INTO MASONRY, BRICK OR BLOCK WALLS

### DESCRIPTION

- 1 Mortar facing over irregular surface
- 2 Pressed steel cover grille
- 3 LVV40 air transfer grille
- 4 Air transfer grille fixing screws into wall plugs
- 5 Use Lorient intumescent sealant to bed air transfer grille into the wall
- 6 Cover grille fixing screws into wall plugs (on both sides of the LVV40)
- 7 Brick, block or masonry wall

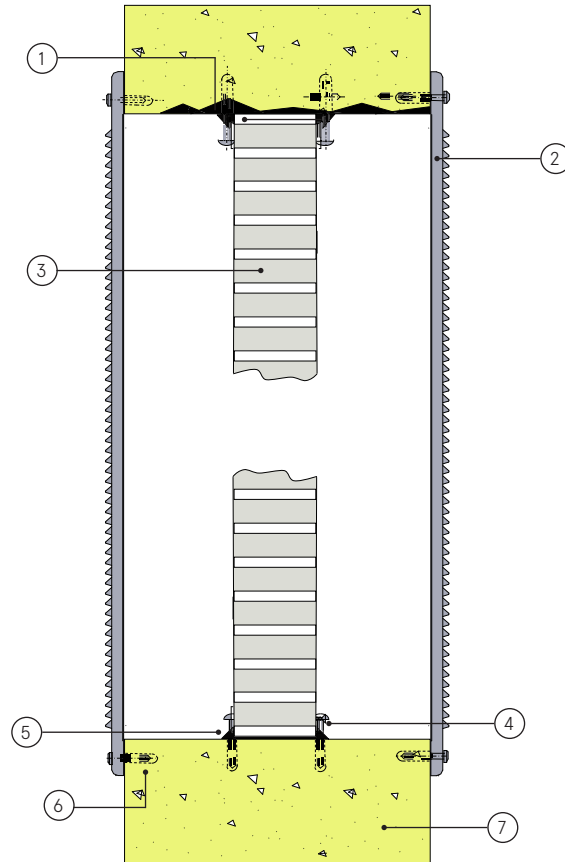
**Note:** In order to comply with CF564, the upper edge of the grille shall be no higher than 3000mm from floor level. The lower edge of the grille shall be no closer than 400mm to floor level

### CONTENTS

- LVV40
- Cover grille (optional)

### TOOLS REQUIRED

- Lorient intumescent sealant
- Wall plugs
- 4 x 50mm screws
- Rawplugs for 4 x 50mm screws



**certifire**  
(CF564)

### LVV40 fitted into masonry, brick or block walls

### FR60

### Fire Resistance in accordance with

BS 476-20: 1987

### Approval Ref

WRFC 111408

### Max single cell size

600mm x 600mm

LVV40 air transfer grilles are supplied 2mm less than the nominal size e.g. a 300mm x 300mm is actually 298mm x 298mm.

### INSTALLATION INSTRUCTIONS

- ▶ Cut the aperture to the required size with a maximum gap all around of 5mm. If resulting aperture is out of square, irregular or oversized, make good with mortar.
- ▶ Trial fit the LVV40 into the aperture and ensure that it can be positioned within the section of the wall, but not necessarily in the mid position, without jamming or twisting.
- ▶ Mark the position of drill points into wall either side of the LVV40.
- ▶ Remove the LVV40 from the wall aperture.
- ▶ Fix screws into wall with a minimum of 4 screws along the perimeter. For larger units use a minimum of 200mm between centres to provide up to 8 screws per side.
- ▶ Position LVV40 and repeat installation of screws on closest side of the LVV40.
- ▶ Bed in sealant around LVV40. Clean off surplus and ensure outer edge of the air transfer grille is fully sealed.
- ▶ Position pressed steel cover grille centrally over one face of the LVV40 and fix using wall plugs supplied.
- ▶ Repeat to other face if two cover grilles are to be fitted.
- ▶ **Note: Fixings supplied by others.**