

FIRE DOOR 4

LVH44 AIR TRANSFER GRILLE WITH COVER GRILLES INTO TIMBER FIRE DOOR

DESCRIPTION

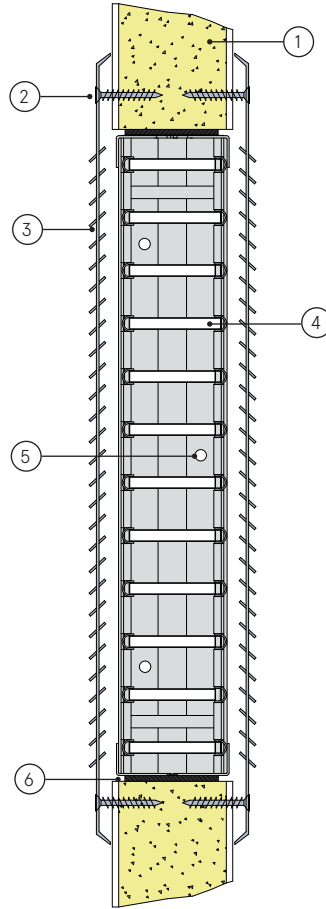
- 1 FD30: 44mm thick timber fire door. FD60: 54mm thick timber door
- 2 Grille to door fasteners - 25mm wood screws
- 3 Pressed steel cover grille
- 4 LVH44 intumescent air transfer grille
- 5 Intumescent air transfer grille to door fasteners - 25mm wood screws
- 6 Intumescent liner.

CONTENTS

- LVH44 air transfer grille
- Intumescent liner (LX4402) or (LX5402)
- Cover grille (optional)

TOOLS REQUIRED

- 25mm wood screws
- Power drill
- Screw driver



Note: Screw holes based on 600mm square grille. Location and number may vary depending on the size of the grille. Max centres 200mm.

LVH44 into a timber fire door

FD30/60

Fire Resistance in accordance with

BS 476-22:1987

Approval Ref

WFRC 397901

Max single cell size

600mm x 600mm

LVH44 air transfer grilles are supplied 2mm less than the nominal size e.g. a 300mm x 300mm is actually 298mm x 298mm.

INSTALLATION INSTRUCTIONS

- ▶ Ensure that cutting an aperture in the door will not detract from the fire integrity of the door. Contact the manufacturer to establish the maximum size and optimum position.
 - ▶ Cut the aperture to the required size with a maximum gap all around of 3mm.
 - ▶ Pre-drill vertical outer frames of LVH44 to accept fixing screws.
 - ▶ Apply Lorient intumescent liner to the inside faces of the aperture.
 - ▶ Fit the LVH44 into the aperture and ensure that it is positioned equidistant from each face and parallel from both faces of the door.
 - ▶ Fit retaining wood screws through pre-drilled holes in LVH44 vertical outer uprights into door.
 - ▶ Position pressed steel cover grille centrally over one face of the LVH44 and fix using screws.
 - ▶ Repeat to other face if two cover grilles are to be fitted.
- ▶ **Note:** Fixings supplied by others.