

# FIRE DOOR 6

## LVH44 AIR TRANSFER GRILLE WITH COVER GRILLES INTO STEEL FIRE DOOR

### DESCRIPTION

- |   |  |
|---|--|
| 1 | 44mm thick steel door  |
| 2 | Pressed steel cover grille to door   |
| 3 | Pressed steel cover grille   |
| 4 | LVH44 intumescent air transfer grille  |
| 5 | Intumescent air transfer grille to door fasteners - self tapping screws (3.2mm x 16mm) |
| 6 | Use intumescent sealant to bed air transfer grille into door                           |

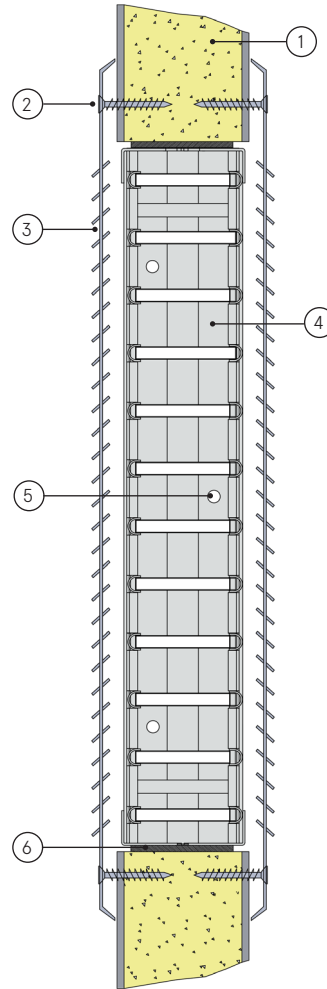
In order to comply with CF564, the upper edge of the grille shall be no higher than 3000mm from the floor level. The lower edge of the grille shall be no closer than 200mm to floor level. Consult door manufacturers before cutting out in relation to permissible aperture sizes and locations.

### CONTENTS

- LVH44 air transfer grille
- Cover grille (optional)

### TOOLS REQUIRED

- Self tapping screws (3.2 x 16mm)
- Power drill
- Screw driver



Note: Screw holes based on 600mm square grille. Location and number may vary depending on the size of the grille. Max centres 200mm.

**certifire**  
(CF564)

### LVH44 into a steel fire door

### FD120

### Fire Resistance in accordance with

BS 476-22:1987

### Approval Ref

WFRC C397901  
CF564\*

### Max single cell size

600mm x 600mm

\*Any rectangular shape up to 0.2025m<sup>2</sup>

LVH44 air transfer grilles are supplied 2mm less than the nominal size e.g. a 300mm x 300mm is actually 298mm x 298mm.

### INSTALLATION INSTRUCTIONS

- ▶ Ensure that cutting an aperture in the door will not detract from the fire integrity of the door. Contact the manufacturer to establish the maximum size and optimum position.
- ▶ Cut the aperture to the required size with a maximum gap all around of 3mm.
- ▶ Pre-drill vertical outer frames of LVH44 to accept fixing screws.
- ▶ Apply Lorient intumescent liner to the inside faces of the aperture.
- ▶ Fit the LVH44 into the aperture and ensure that it is positioned equidistant from each face and parallel from both faces of the door.
- ▶ Fit retaining self tapping screws through pre-drilled holes in LVH44 vertical outer uprights into door.
- ▶ Position pressed steel cover grille centrally over one face of the LVH44 and fix using screws.
- ▶ Repeat to other face if two cover grilles are to be fitted.
- ▶ **Note: Fixings supplied by others.**