



WALL 5

LVH44 INTO FIRE RATED FLEXIBLE WALL WITH TAB PLATE FIXINGS

DESCRIPTION

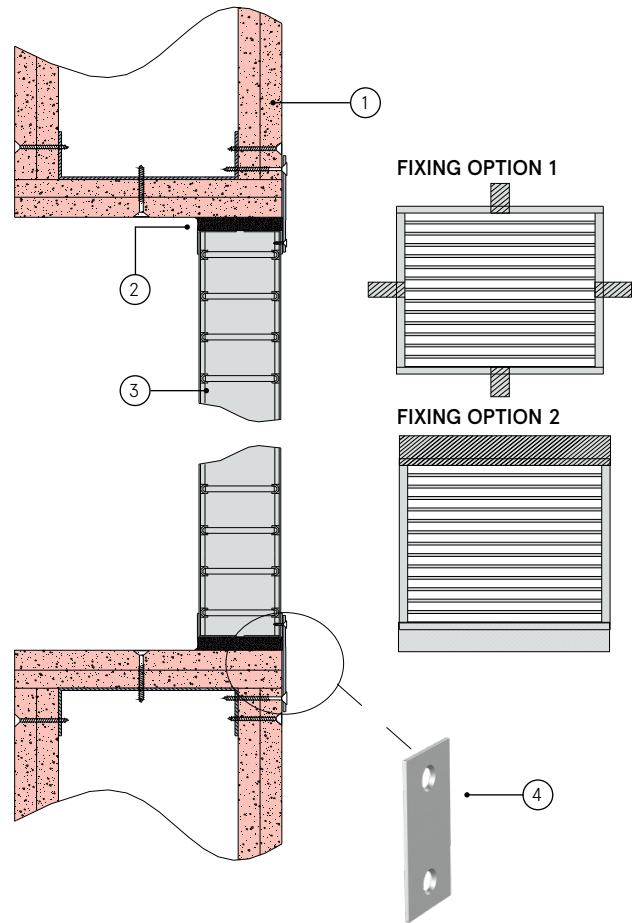
- 1 Fire rated flexible wall
 - 2 Lorient intumescent sealant around LVH44 perimeter to a maximum clearance of 25mm
 - 3 Lorient LVH44 intumescent air transfer grille
 - 4 **Fixing tab:** 40 x 20 x 1mm thick minimum galvanised steel tabs fixed to LVH44 with self tapping screws and to wall with drywall screws
- Fixing option 1:** 20mm wide tabs, central to all four sides or at 200mm maximum centres
- Fixing option 2:** Full width tabs top and bottom only with 200mm fixing centres.

CONTENTS

- LVH44 air transfer grille
- Cover grille (optional)

TOOLS REQUIRED

- Steel tabs
- Self tapping screws (3.5 x 16mm)
- Drywall screws
- Lorient intumescent sealant



WALL MOUNTED SYSTEMS

LVH44 for FR flexible wall with tab fixings

FR120

Fire Resistance in accordance with

BS 476-22:1987

Approval Ref

WFRC 121316 (AW5)

Max single cell size

600mm x 600mm

LVH44 air transfer grilles are supplied 2mm less than the nominal size e.g. a 300mm x 300mm is actually 298mm x 298mm.

INSTALLATION INSTRUCTIONS

- ▶ Fix the mounting tabs onto the LVH44 air transfer grilles using self tapping screws to **one side only**.
- ▶ Insert LVH44 into fire rated flexible wall opening. (Note: air transfer grille does not have to be centrally positioned in the opening).
- ▶ Fix the tab to the fire rated flexible wall with drywall screws.
- ▶ Apply a bead of Lorient intumescent sealant to full depth around the perimeter of LVH44 as shown (Note: maximum clearance of 25mm applies).
- ▶ Connect ductwork (or cover grille) directly to wall using approved breakaway connections to ensure compliance.
- ▶ **Note: Fixings supplied by others.**