

# WALL 4

## LVH44 INTO FIRE RATED FLEXIBLE WALL WITH ANGLE FIXINGS

### DESCRIPTION

- 1 Fire rated flexible wall
- 2 Lorient intumescent sealant around LVH44 perimeter to a maximum clearance of 25mm
- 3 Lorient LVH44 intumescent air transfer grille
- 4 **Fixing angle:** 20 x 20 x 1mm thick minimum galvanised steel angles fixed to LVH44 with self tapping screws and to wall with drywall screws

**Fixing option 1:** 20mm wide angles, central to all four sides or at 200mm maximum centres

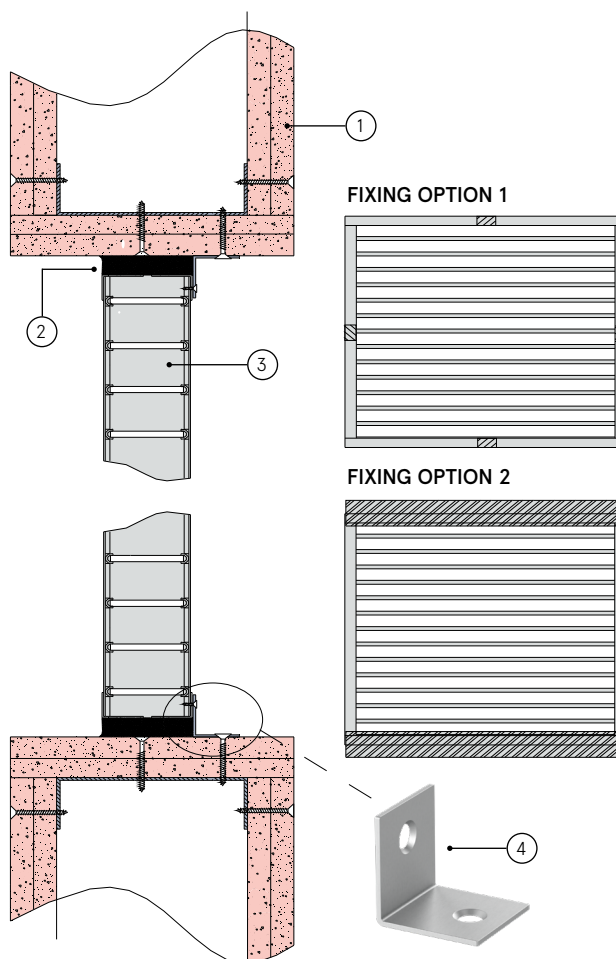
**Fixing option 2:** Full width angles top and bottom only with 200mm fixing centres.

### CONTENTS

- LVH44 air transfer grille
- Cover grille (optional)

### TOOLS REQUIRED

- Angle fixings
- Self tapping screws (3.5 x 16mm)
- Drywall screws
- Lorient intumescent sealant



### LVH44 for FR flexible wall with angle fixings

#### FR60 / FR120

#### Fire Resistance in accordance with

BS 476-22:1987

#### Approval Ref

FSP 1970

FRT 230055

#### Max single cell size

600mm x 600mm

LVH44 air transfer grilles are supplied 2mm less than the nominal size e.g. a 300mm x 300mm is actually 298mm x 298mm.

### INSTALLATION INSTRUCTIONS

- ▶ Fix the mounting angles onto the LVH44 air transfer grille using self tapping screws to **one side only**.
- ▶ Insert LVH44 into fire rated flexible wall opening. (Note: air transfer grille does not have to be centrally positioned in the opening).
- ▶ Fix the angle to the fire rated flexible wall with drywall screws.
- ▶ Apply a bead of Lorient intumescent sealant to full depth around the perimeter of LVH44 as shown (Note: maximum clearance of 25mm applies).
- ▶ Connect ductwork (or cover grille) directly to wall using approved breakaway connections to ensure compliance.
- ▶ **Note: Fixings supplied by others.**