

# DUCT 12

## FIRE RATED FLEXIBLE WALL (DUCT TO GRILLE)

### DESCRIPTION

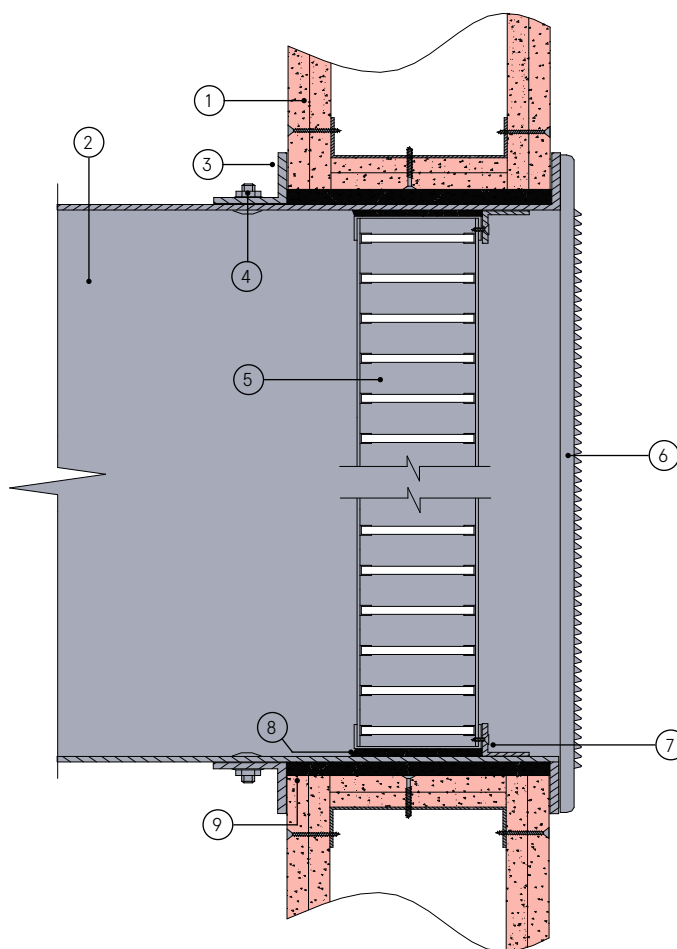
- |   |  |
|---|--|
| 1 | Fire rated flexible wall   |
| 2 | Flanged duct with breakaway connection   |
| 3 | Mounting angles  |
| 4 | M5 securing bolts  |
| 5 | LVH44 air transfer grille  |
| 6 | Lorient RVCG steel face fixed cover grille   |
| 7 | Damper retaining bracket 1mm galvanised steel fixed with short self tapping screws |
| 8 | Seal around edge of air transfer grille with intumescent sealant                   |
| 9 | Fill any gaps between the LVH44 and wall opening with Lorient intumescent sealant  |

### CONTENTS

- LVH44 air transfer grille

### TOOLS REQUIRED

- Drill & 5mm bit
- M5 bolts
- Self tapping screws (3.2mm x 16mm)
- Mounting angles (40 x 40 x 2mm)
- Lorient intumescent sealant



### Fire rated flexible wall (duct to grille)

## FR120

### Fire Resistance in accordance with

BS 476-22:1987

### Approval Ref

WFRC C121316 (W-Series)

### Max single cell size

600mm x 600mm

LVH44 air transfer grilles are supplied 2mm less than the nominal size e.g. a 300mm x 300mm is actually 298mm x 298mm.

### INSTALLATION INSTRUCTIONS

- ▶ Prepare a short piece of duct at least 100mm longer than the thickness of the wall to be penetrated. (100mm wall thickness will require a minimum stub duct length of 200mm).
- ▶ To one end of the stub duct fit a wall mounting angle and a joining angle, these may be welded to the ducts or screw fixed. Ensure that all mountings are correctly aligned and square with the stub duct.
- ▶ Fit the air transfer grille retaining brackets to the LVH44. Position the LVH44 into the stub duct where it will be at the centre of the section of the wall when installed e.g. 50mm from inner flange of mounting bracket for a 100mm thick wall.
- ▶ Fix the LVH44 using short self tapping screws through retaining brackets.
- ▶ Seal around edge of air transfer grille with intumescent sealant.
- ▶ Make an opening in the wall.
- ▶ Check the mounting flange size is not less than twice the clearance between the air transfer grille and opening.
- ▶ Insert LVH44 into fire rated flexible wall opening.
- ▶ Check the casing fully penetrates the wall opening.
- ▶ Fill any gaps between the LVH44 and wall opening with Lorient intumescent sealant.
- ▶ Fit mounting flanges and ensure flanges are hard against the wall and the fixings are adequately tightened.
- ▶ Check the air transfer grille assembly sits squarely in the opening.
- ▶ Connect ductwork to casing, using approved breakaway connections to ensure compliance.
- ▶ Ensure convenient access is provided for easy inspection and cleaning as necessary.