

DUCT 11

FIRE RATED FLEXIBLE WALL (DUCT TO DUCT)

DESCRIPTION

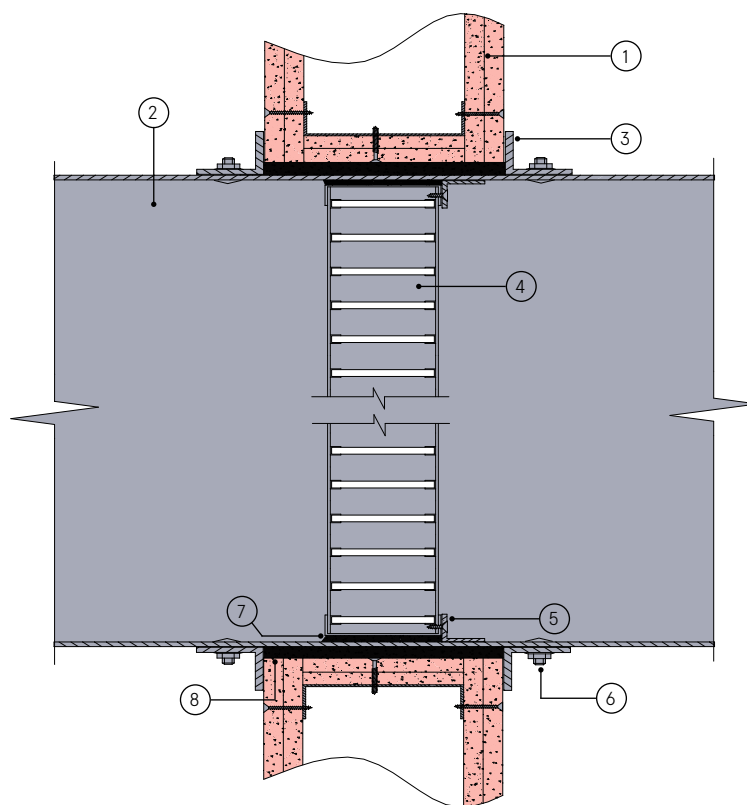
- | | |
|---|--|
| 1 | Fire rated flexible wall |
| 2 | Straight through duct with breakaway connections |
| 3 | Mounting angles |
| 4 | LVH44 air transfer grille |
| 5 | Damper retaining bracket 1mm galvanised steel fixed with short self tapping screws |
| 6 | M5 securing bolts |
| 7 | Seal around edge of air transfer grille with intumescent sealant |
| 8 | Fill any gaps between the LVH44 and wall opening with Lorient intumescent sealant |

CONTENTS

- LVH44 air transfer grille

TOOLS REQUIRED

- Drill & 5mm bit
- M5 bolts
- Self tapping screws (3.2mm x 16mm)
- Mounting angles (40 x 40 x 2mm)
- Lorient intumescent sealant



Fire rated flexible wall (duct to duct)

FR120

Fire Resistance in accordance with

BS 476-22:1987

Approval Ref

WFRC C121316 (W-Series)

Max single cell size

600mm x 600mm

LVH44 air transfer grilles are supplied 2mm less than the nominal size e.g. a 300mm x 300mm is actually 298mm x 298mm.

INSTALLATION INSTRUCTIONS

- ▶ Prepare a short piece of duct at least 200mm longer than the thickness of the wall to be penetrated. (100mm wall thickness will require a minimum stub duct length of 300mm).
- ▶ To one end of the stub duct fit a wall mounting angle and a joining angle, these may be welded to the ducts or screw fixed. Ensure that all mountings are correctly aligned and square with the stub duct.
- ▶ Fit the air transfer grille retaining brackets to the LVH44. Position the LVH44 into the stub duct where it will be at the centre of the section of the wall when installed e.g. 50 mm from inner flange of mounting bracket for a 100 mm thick wall.
- ▶ Fix the LVH44 using short self tapping screws through retaining brackets.
- ▶ Seal around edge of air transfer grille with intumescent sealant.
- ▶ Make an opening in the wall.
- ▶ Check the mounting flange size is not less than twice the clearance between the air transfer grille and opening.
- ▶ Insert LVH44 into wall opening.
- ▶ Check the casing fully penetrates the wall opening.
- ▶ Tighten bolts on one set of mounting angles, ensuring the LVH44 sits squarely in the wall.
- ▶ Fill any gaps between the air transfer grille and wall opening with Lorient intumescent sealant.
- ▶ Fit mounting flanges on opposite side of wall, ensuring the flanges are hard against the wall and the fixings are adequately tightened.
- ▶ Check the air transfer grille assembly sits squarely in the opening.
- ▶ Connect ductwork to casing, using approved breakaway connections to ensure compliance.
- ▶ Ensure convenient access is provided for easy inspection and cleaning as necessary.