

# WALL 20

## LVH20S FIRE + SMOKE AIR TRANSFER GRILLE FITTED INTO RIGID WALLS

### DESCRIPTION

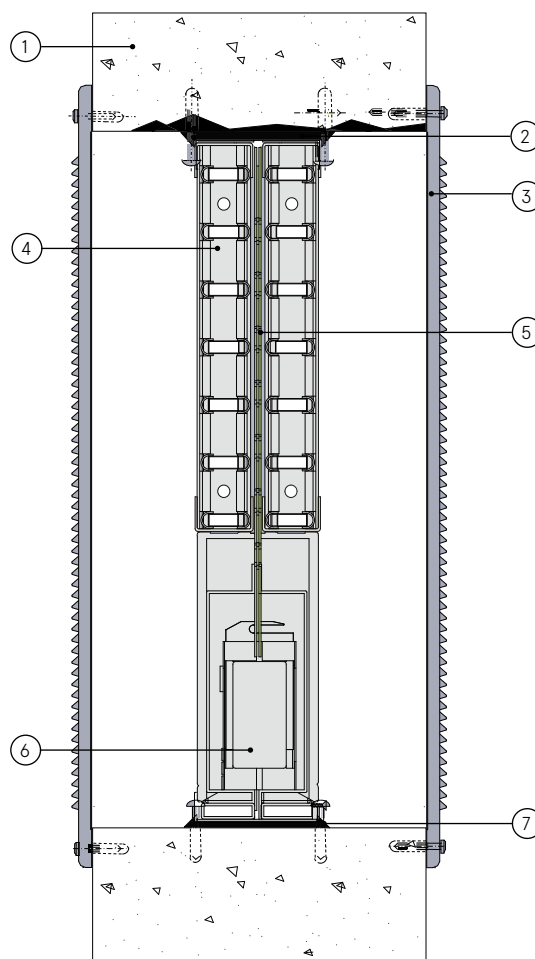
- 1 Rigid wall construction
- 2 Make good internal faces with mortar rendering
- 3 Cover grille
- 4 LVH20S fire + smoke air transfer grille
- 5 Hit + miss smoke control plates. Centre plate moves, outer plates fixed
- 6 Servo driven actuator
- 7 Use intumescent sealant to bed air transfer grille into aperture.

### CONTENTS

- LVH20S fire + smoke resistant air transfer grille
- Cover grille (optional)
- Wiring instructions

### TOOLS REQUIRED

- 50mm screws
- Wall plugs for 50mm screws
- Lorient intumescent sealant



### LVH20S fitted into rigid walls

#### E60S

#### Fire Resistance in accordance with

BS EN 1364-5:2017

#### Approval Ref

19-19894-253

#### Max single cell size

600mm (w) x 400mm (h)

LVH20S fire + smoke air transfer grilles are supplied 2mm less than the nominal size e.g. a 300mm x 300mm is actually 298mm x 298mm.

### INSTALLATION INSTRUCTIONS

- ▶ Cut the aperture to the required size with a maximum gap all around of 5mm. If resulting aperture is out of square, irregular or oversized, make good with mortar.
- ▶ Trial fit the LVH20S into the aperture and ensure that it can be positioned within the section of the wall, but not necessarily in the mid position, without jamming or twisting.
- ▶ Mark the position of drill points into wall either side of the LVH20S.
- ▶ Remove the LVH20S from the wall aperture.
- ▶ Fix screws into wall with a minimum of 4 screws along the perimeter. For larger units use a maximum of 200mm between centres to provide up to 8 screws per side.
- ▶ Position LVH20S and repeat installation of screws on closest side of the LVV40.
- ▶ Bed in sealant around LVH20S. Clean off surplus and ensure outer edge of the air transfer grille is fully sealed.
- ▶ Fix actuator cable to wall to prevent it fouling the shutter plates.
- ▶ **See wiring instructions.**
- ▶ Carry out function check of the ATG by activation from the control unit.
- ▶ After satisfactorily completing the function test, position a cover grille concentrically over one face of the LVH20S and fix using screws into wall plugs.
- ▶ Repeat to other face if two cover grilles are to be fitted.