

# LVH20S

## HIGH PERFORMANCE VISION FIRE + SMOKE DAMPER

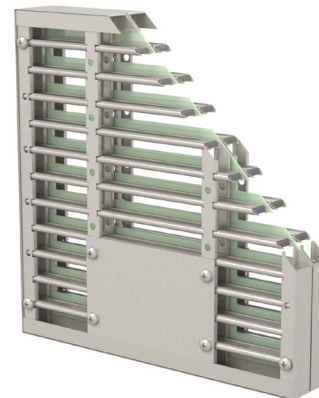
The LVH20S damper is a unique combination of intumescent slats to provide two hour fire resistance and excellent insulation properties together with a servo powered set of shutter plates that control cold and warm smoke. Ideal for low velocity air handling systems, it can be operated as a stand-alone unit or in multiple units. It can be interfaced with a fire alarm panel through the Lorient Talkback damper control system.



FIRE + SMOKE RESISTANT AIR TRANSFER GRILLES

### Key benefits

- ▶ Contains cold smoke & toxic gases remote from source of fire
- ▶ Simple installation
- ▶ Auto reset & failsafe
- ▶ Safe low DC voltage
- ▶ Status reporting & auto-cycling via Talkback Damper Control Monitor (DCM)
- ▶ Optional audio warning facility
- ▶ Connects to fire panel and/or BMS
- ▶ BMS alarm notification via Alarm Monitoring System (AMS)
- ▶ Nominal 5mA current open/closed
- ▶ Max 200mA in operation
- ▶ Allows bi-directional airflow



▲ LVH20S

### STANDARD SIZES AVAILABLE (MM)

WIDTH	198	248	298	348	398	448	498	548	598
HEIGHT	198	248	298	348	398	448	498	548	598

Other non-standard sizes may be available - please ask for details.

### SYSTEM SPECIFICATIONS

#### Test evidence

- ▶ Fire: AS1530.4: 2014.
- ▶ Fire: BS 476-20: 1987.
- ▶ Fire: BS EN 1364-5: 2017.
- ▶ Smoke: BS 476-31.1: 1983 (shutterplate).

#### Performance

- ▶ Can be used to provide up to 120 minutes resistance to fire & cold smoke.
- ▶ May provide 30mins insulation when used in conjunction with a cover grille.

#### Size

- ▶ Width: 200mm - 600mm (in 50mm increments).
- ▶ Height: 200mm - 600mm (in 50mm increments).
- ▶ Other non-standard sizes may be obtained by arrangement.

#### Thickness

- ▶ 47mm.

#### Free area

- ▶ Approx 30% free area.

#### Application

- ▶ Suitable for doors, walls & ducts.

#### Orientation

- ▶ LVH20S must be used in the vertical plane.

#### Material

- ▶ Z275 galvanised steel.
- ▶ Metal slats with an intumescent core.
- ▶ Electro mechanically operated smoke shutter mechanism.

#### Finish

- ▶ Silver as standard.

#### Fixing

- ▶ Each damper is manufactured 5mm less than a nominal aperture size to provide clearance when installed in a duct or other aperture of the same nominal dimensions. e.g. a 195mm x 195mm nominal size damper will suit a 200mm x 200mm aperture.
- ▶ Screwed and bedded in Lorient intumescent sealant.

#### Use with

- ▶ Talkback damper control system.
- ▶ Conductor hinges.
- ▶ Optional Alarm Monitoring System (AMS) and battery backup.
- ▶ Optional cover grille.