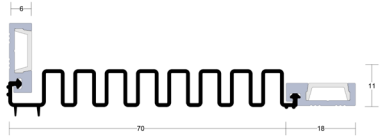


# LAS9070 SI FINGER GUARD SEAL

## FITTING GUIDE



LENGTH \_\_\_\_\_

### CONTENTS

- LAS9070 si Finger Guard Seal
- Bag of screws

### TOOLS REQUIRED

- Tape measure
- Saw, power or hand
- Screw driver
- Drill, power or hand
- 2.5mm drill bit
- Knife
- Pencil or marker

## INSTALLATION DETAIL

### NOTE

It is not necessary to remove the door from its hinges unless otherwise specified.

### STEP 1

Remove the seal from the packaging and measure the door height to determine the seal length required.

### STEP 2

Remove the decorative cover strip from the aluminium carriers.

### STEP 3

Pull back flexible gasket and cut the aluminium carriers to the lengths required.

### STEP 4

Cut the decorative cover strip to the lengths required.

### STEP 5

Slide flexible gasket back into position and cut to required length.

### STEP 6

With the door closed, position the aluminum carriers to the door stop and side of the door, ensure the frame mounted carrier is positioned just back from the door edge allowing the smoke fins to gently sit against the door. The outer edge of the door mounted carrier should be 88mm from the door stop, whilst the door is in the closed position.

### STEP 7

Mark out the slotted hole locations with a pencil. Lightly screw-fix each length through the slotted holes with the screws supplied. Fixing holes are pre-slotted to enable the seal to be accurately adjusted as required.

### STEP 8

Ensure that the Finger Guard profile extends right to the bottom of the door leaf but does not drag on the floor. Check for correct operation as the door is opened and closed.

### STEP 9

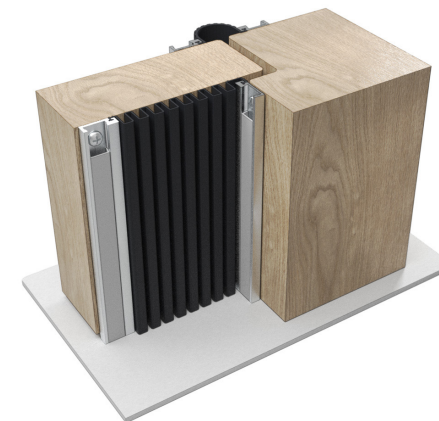
Tighten the screws and replace the decorative cover strip.

**We recommend LAS9070 si be fitted with a LAS9050 si Finger Guard Seal on the hinge side of the door.**

If you require a door bottom seal, only use a product that can be fully mortised. For example, LAS8001 si.



LAS9070



### IMPORTANT

Ensure that the installation of this product does not impede the opening or closing of the door. It is recommended to check the adjustment of the door seal periodically to ensure the door assembly to which it is fitted, closes & latches properly.

### DISCLAIMER

Recommendations as to methods, use of materials and construction details are based on the experience and knowledge of Lorient and are given in good faith as a general guide and service to designers, contractors and manufacturers. Lorient reserves the right to make alterations or delete installation detail without prior notice.

V2

**LORIENT**  
**ASSA ABLOY**

ASSA ABLOY LTD T/A LORIENT  
Endeavour House  
Fairfax Road  
Heathfield Ind Estate  
Newton Abbot  
Devon TQ12 6UD  
United Kingdom

+44 (0)1626 834252  
www.lorient.com.au

All rights reserved. No part of this fitting guide may be reproduced, stored in a retrieval system, or transmitted in any means, electronic, mechanical, photocopying, recording or otherwise without the written permission of Lorient.

© 2024 ASSA ABLOY Ltd T/A Lorient. Lorient is a registered trade mark of ASSA ABLOY LIMITED in England.

For more information please call:

**+44 (0)1626 834252**