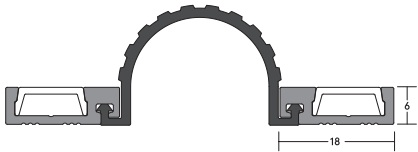


LAS9050 SI FINGER GUARD SEAL

FITTING GUIDE



FOR HINGE SIDE OF DOOR.

LENGTH _____

CONTENTS

- LAS9050 si finger guard seal
- Bag of screws

TOOLS REQUIRED

- Tape measure
- Saw, power or hand
- Screw driver
- Drill, power or hand
- 2.5mm drill bit
- Knife
- Pencil or marker

NOTE

It is not necessary to remove the door from its hinges unless otherwise specified.

STEP 1

Remove the seal from the packaging and measure the door height to determine the seal length required.

STEP 2

Remove the decorative cover strip from the aluminium carriers.

STEP 3

Pull back flexible gasket and cut the aluminium carriers to the lengths required.

STEP 4

Cut the decorative cover strip to the lengths required.

STEP 5

Slide flexible gasket back into position and cut to required length.

STEP 6

Position the aluminium carriers to either side of the door hinge and mark out the slotted hole locations with a pencil. Refer to the diagrams for the correct location.

STEP 7

Lightly screw-fix each length to the door through the slotted holes with the screws supplied. Fixing holes are pre-slotted to enable the seal to be accurately adjusted as required.

STEP 8

Ensure that the Finger Guard profile covers the gap between the door leaf and frame right to the bottom of the assembly, but does not drag on the floor.

STEP 9

Tighten the screws and replace the decorative cover strip.

NOTE

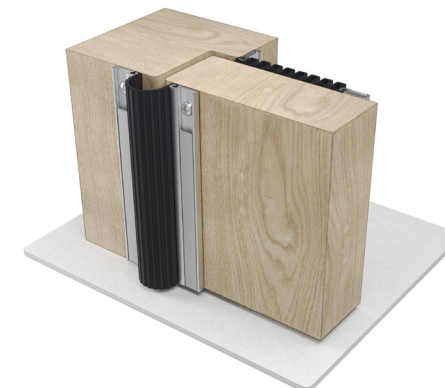
Ensure that the installation of this product does not impede the opening or closing of the door. It is recommended to check the adjustment of the door seal periodically to ensure the door assembly to which it is fitted, closes and latches properly.

We recommend LAS9050 si be fitted with a LAS9030 or LAS9070 si Finger Guard Seal.

If you require a door bottom seal, only use a product that can be fully mortised. For example, LAS8001 si.



LAS9050 si



NOTE

Recommendations as to methods, use of materials and construction details are based on the experience and knowledge of Lorient and are given in good faith as a general guide and service to designers, contractors and manufacturers.

Lorient reserves the right to make alterations or delete installation detail without prior notice.