

## SPECIALITY SEALS

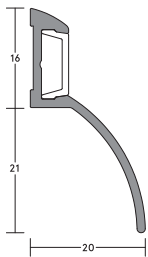
# LAS9005

## MEDIUM DUTY

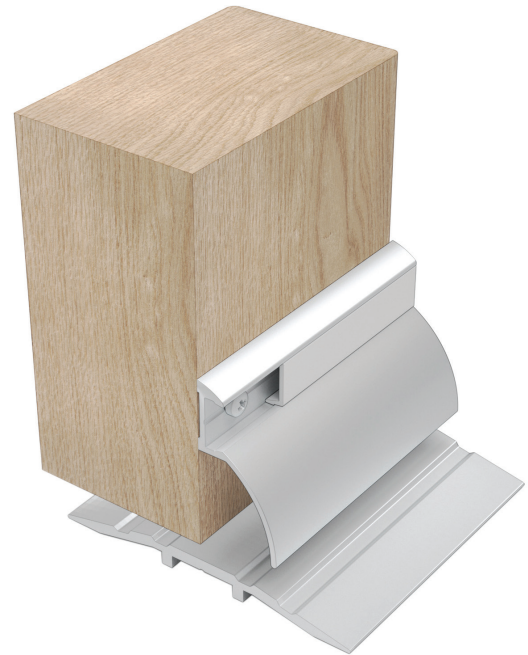
A drip guard designed to channel rain water away from the bottom of exposed doors. Use with LAS9001 at the top of the door. Aesthetic anodised aluminium finish. Easy to fit. Concealed fixings.



SPECIALITY SEALS



▲ LAS9005



▲ LAS9005  
(shown with LAS4010)

### SYSTEM SPECIFICATIONS

#### Performance

- ▶ Protects against weather/rain.

#### Location

- ▶ Single and double leaf doors.
- ▶ Roller shutter doors.
- ▶ Up and over doors.

#### Seal material

- ▶ Extruded aluminium.

#### Standard lengths

- ▶ 1m and 2.1m.

#### Fixing

- ▶ Steel screws are supplied (self-drilling and self-tapping screws for metal construction available on request).
- ▶ A PVC cover strip conceals the fixings.

#### Finish

- ▶ Silver anodised aluminium.