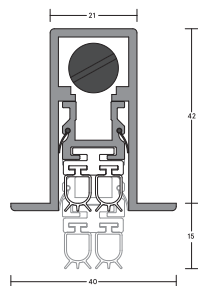


LAS8012 SI DROP SEAL FITTING GUIDE



LENGTH _____

CONTENTS

- LAS8012 si drop seal
- 2 x end caps or optional die cast end plates
- 1 x striker button
- Bag of screws

TOOLS REQUIRED

- Tape measure
- Pencil or marker
- Saw, power or hand
- Screw driver
- Drill, power or hand
- 2.5mm drill bit
- 4.5mm drill bit
- Countersinking bit
- Scissors, knife or snips

For more information please call:

+9714 883 7206

INSTALLATION DETAIL

STEP 1

Remove the seal from the packaging and check maximum cut back sizes.

STEP 2

Remove the door from its hinges, lay on it's side and firmly restrain. If the door bottom is already grooved to suit the seal dimensions, go to step 5.

STEP 3

Measure and mark the seal position on the bottom edge of the door. For optimum operation, the seal should be positioned on the centre line of the door.

STEP 4

Fit a suitable cutter to the router and set guide. Machine a 21mm wide by 43mm deep groove along the bottom of the door.

STEP 5

Clear chips and dust from groove, check width and depth.

STEP 6

Measure the door width. At the opposite end to the actuator button, pull back the gasket and using a power/hack saw, cut the aluminium sections to the measured length. Remove cutting swarf/debris.

NOTE

When cutting the seal to length, shorten the inner carrier by a further 3mm by removing the small self tapping screw from the top of the housing and sliding the internal carrier proud of the housing. Cut to length, slide back and re-fix screw. Push the gasket back into position and cut to length with a sharp knife.

STEP 7

Position the seal in the groove and mark fixing hole positions on the bottom edge. Ensure that the actuator button is on the hinge side of the door.

STEP 8

Drill pilot holes and then screw fix seal into position. Push fit end caps.

STEP 9

When the door leaf is re-fitted open and close the door observing the operation of the seal. Adjust accordingly by winding the actuator button clockwise to reduce movement and anti-clockwise to increase the seal movement.

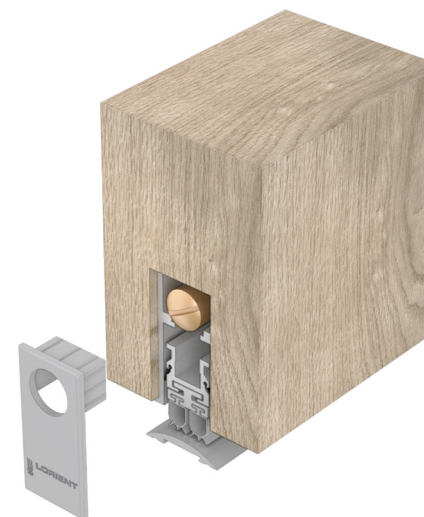
NOTE

For optimum results the seal should be adjusted so that the seals silicone gasket touches the sill in the final closing moment of the door.

We recommend LAS8012 si drop seal be used together with a Lorient perimeter seal and, if required a threshold plate.

NOTE

Ensure that the installation of this product does not impede the opening or closing of the door. It is recommended to check the adjustment of the door seal periodically to ensure the door assembly to which it is fitted, closes and latches properly.



CUT BACK SIZES

Do not cut the seal shorter than the lengths indicated below or this will affect the normal operation of the internal mechanism.

335mm cuts to 275mm
 435mm cuts to 335mm
 535mm cuts to 435mm
 635mm cuts to 535mm
 735mm cuts to 635mm
 835mm cuts to 735mm
 935mm cuts to 835mm
 1035mm cuts to 935mm
 1135mm cuts to 1035mm
 1235mm cuts to 1135mm

NOTE

Recommendations as to methods, use of materials and construction details are based on the experience and knowledge of Lorient and are given in good faith as a general guide and service to designers, contractors and manufacturers.

Lorient reserves the right to make alterations or delete any installation detail without prior notice.

V1