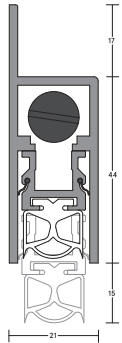


LAS8006 SI DROP SEAL FITTING GUIDE



LENGTH

CONTENTS

- LAS8006 si drop seal
- 2 x end caps
- Bag of screws
- 1 x striker button

TOOLS REQUIRED

- Tape measure
- Pencil or marker
- Saw, power or hand
- Screw driver
- Drill, power or hand
- 2.5mm drill bit
- 4.5mm drill bit
- Countersinking bit
- Scissors, knife or snips

FACE-FIXED

STEP 1

Remove the seal from the packaging and check maximum cut back sizes.

STEP 2

Measure the distance between the door stops.

STEP 3

At the opposite end to the actuator button, pull back the gasket and using a power/ hack saw, cut the aluminium sections to the measured length, less 7mm for end caps and clearance. Remove cutting swarf/debris.

NOTE

When cutting the seal to length, shorten the inner carrier by a further 3mm by removing the small self tapping screw from the face of the housing and sliding the internal carrier proud of the housing. Cut to length, slide back and re-fix screw. Push gasket back into position and cut to length with a sharp knife.

STEP 4

Fit the end cap to the actuator button end and position the seal to the bottom face of the door on the stop side, button end tight up to the door stop and allowing a maximum of 15mm between the door bottom and the sill. Ensure the actuator button is on the hinge side.

STEP 5

Drill and countersink 4.5mm fixing holes in the top flange of the housing. Pre-drill and screw fix to the door using screws provided. Push fit the remaining end cap.

STEP 6

For timber frames, position the striker button on the stop where the actuator button meets the door stop.

STEP 5

Open and close the door observing the operation of the seal. Adjust accordingly by winding the actuator button clockwise to reduce movement and anticlockwise to increase the seal movement.

NOTE

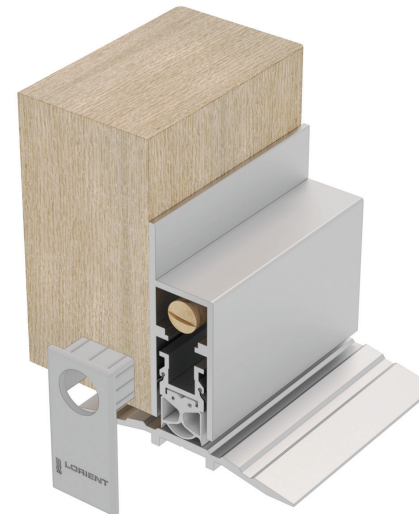
For optimum results the seal should be adjusted so that the silicone gasket touches the sill in the final closing moment of the door.

We recommend the LAS8006 si drop seal be fitted with a perimeter seal and a threshold plate.

NOTE

Recommendations as to methods, use of materials and construction details are based on the experience and knowledge of Lorient and are given in good faith as a general guide and service to designers, contractors and manufacturers.

Lorient reserves the right to make alterations or delete any installation detail without prior notice.



CUT BACK SIZES

Do not cut the seal shorter than the lengths indicated below or this will affect the normal operation of the internal mechanism.

335mm cuts to 275mm
 435mm cuts to 335mm
 535mm cuts to 435mm
 635mm cuts to 535mm
 735mm cuts to 635mm
 835mm cuts to 735mm
 935mm cuts to 835mm
 1035mm cuts to 935mm
 1135mm cuts to 1035mm
 1235mm cuts to 1135mm



Gasketing materials for fire doors intended for application to wood and plastic covered composite and wood core doors rated up to 1.5 hours. Listed steel frames and/or classified steel covered composite, hollow metal doors rated up to 3 hours.

INSTALLATION DETAIL

REVERSING - HAND OF SEAL

STEP 1

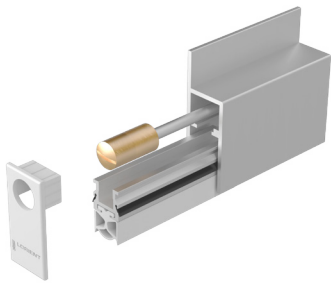
Remove the seal from the packaging and check maximum cut back sizes.

STEP 2

Remove the self-tapping screw from the front face.

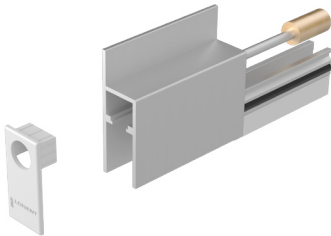
STEP 3

Pulling on actuator button, remove the internal carrier from the housing. Ensure not to disturb the sequence of components.



Step 4

Replace the internal carrier into the opposite end of the housing. Ensure that the internal carrier is flush with the end of the housing at the button end.



STEP 5

Secure internal carrier by refixing selftapping screw into the other hole location at the other end of the housing.

STEP 6

Check for correct operation before cutting to size.

SEMI-MORTISED

STEP 1

Remove the seal from the packaging and check maximum cut back sizes.

STEP 2

Remove the door from its hinges. Cut a stepped rebate, 44mm x 21mm for the bottom section of the seal and a 17mm x 3mm rebate for the top flange, on the side of the door to which the seal is to be positioned.

STEP 3

Measure the door width.

STEP 4

Pull back the gasket from the opposite end to the actuator button and using a power saw/hacksaw, cut the aluminium sections to the door width. Remove cutting swarf/debris.

NOTE

When cutting the seal to length, shorten the inner carrier by a further 3mm by removing the small self tapping screw from the face of the housing and sliding the internal carrier proud of the housing. Cut to length, slide back and re-fix screw. Push gasket back into position and cut to length with a sharp knife.

STEP 5

Position the seal into the cut rebate. Ensure the actuator button is on the hinge side.

STEP 6

Drill and countersink 4.5mm fixing holes in the top flange of the housing. Pre-drill and screw fix to the door using screws provided. Push fit end caps.

STEP 7

For timber frames, position the striker button on the stop where the actuator button meets the door jamb.

STEP 8

Open and close the door observing the operation of the seal. Adjust accordingly by winding the actuator button clockwise to reduce movement and anti-clockwise to increase the seal movement.

NOTE

For optimum results the seal should be adjusted so that the silicone gasket touches the sill in the final closing moment of the door.

We recommend the LAS8006 si drop seal be fitted with a perimeter seal and a threshold plate.

IMPORTANT

Ensure that the installation of this product does not impede the opening or closing of the door. It is recommended to check the adjustment of the door seal periodically to ensure the door assembly to which it is fitted, closes and latches properly.

NOTE

Recommendations as to methods, use of materials and construction details are based on the experience and knowledge of Lorient and are given in good faith as a general guide and service to designers, contractors and manufacturers.

Lorient reserves the right to make alterations or delete any installation detail without prior notice.



CUT BACK SIZES

Do not cut the seal shorter than the lengths indicated below or this will affect the normal operation of the internal mechanism.

335mm cuts to 275mm
435mm cuts to 335mm
535mm cuts to 435mm
635mm cuts to 535mm
735mm cuts to 635mm
835mm cuts to 735mm
935mm cuts to 835mm
1035mm cuts to 935mm
1135mm cuts to 1035mm
1235mm cuts to 1135mm



Gasketing materials for fire doors intended for application to wood and plastic covered composite and wood core doors rated up to 1.5 hours. Listed steel frames and/or classified steel covered composite, hollow metal doors rated up to 3 hours.

V1



Lorient Southeast Asia Pte Ltd
9 Kallang Place #04-02
Singapore, 339154

+65 6270 1279
www.lorient.com.sg

All rights reserved. No part of this fitting guide may be reproduced, stored in a retrieval system, or transmitted in any means, electronic, mechanical, photocopying, recording or otherwise without the written permission of Lorient Polyproducts Limited.
© Lorient Polyproducts Ltd 2019