

DROP SEALS

LAS8006 si

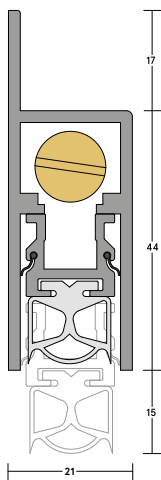
HEAVY DUTY **30dB**

A heavy duty, face-fixed automatic drop seal. It features a high efficiency mechanism, which lifts the seal clear of the floor as soon as the door is opened by a few millimetres; resulting in lower door operating forces. Requires no power connection. Self-levelling on uneven floors; seal height can be adjusted independently of fixing screws.

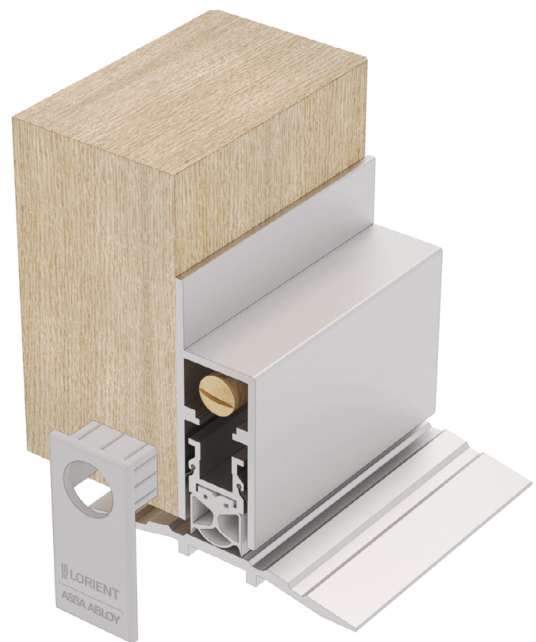


ID No.
290

DROP SEALS



LAS8006 si



LAS8006 si (shown with LAS4010)

SYSTEM SPECIFICATIONS

Test evidence

- ▶ Smoke: BS 476-31.1: 1983 at ambient temperature.
- ▶ Acoustic: BS EN ISO 10140-2:2010 (up to Rw 30dB).
- ▶ Durability: 100,000 cycles.

Performance

- ▶ Meets smoke requirement: BS 9999: 2017.
- ▶ Suitable for use on timber fire doors.
- ▶ Protects against sound, smoke, fire, draught, light and insects.
- ▶ Suitable for wheeled traffic.

Location

- ▶ Single swing, single and double leaf doors.
- ▶ For use on both right and left handed doors.

Use with

- ▶ Any perimeter seal. Any threshold plate.

Min/max gap size

- ▶ 1mm/15mm.

Seal material

- ▶ Black or grey silicone rubber.

Standard lengths

- ▶ 335mm, 435mm, 535mm, 635mm, 735mm, 835mm, 935mm, 1035mm, 1135mm and 1235mm.
- ▶ Note: Each length can be cut back to the next size down. The 335mm can be cut back to 275mm.

Fixing

- ▶ Fixing screws are supplied, holes should be drilled at time of fixing

Adjustment

- ▶ Self-levelling on uneven surfaces – can be adjusted independently of the fixing screws.

Finishes

- ▶ Silver anodised aluminium with grey end caps and grey silicone rubber gasket as standard.
- ▶ Bronze anodised aluminium with black end caps and black silicone rubber gasket are subject to non-standard charges and additional lead times.
- ▶ Other powder-coated colour finishes (non-standard – charges and lead times apply).

Certification