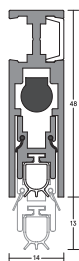


LAS8003 SI

DROP SEAL

FITTING GUIDE



LENGTH _____

CONTENTS

- LAS8003 si drop seal
- Flexible cover strip
- 2 x end caps
- Fixing screws
- 1 x striker button

TOOLS REQUIRED

- Tape measure
- Pencil or marker
- Saw, power or hand
- Screw driver
- Drill, power or hand
- 2.5mm drill bit
- 4mm drill bit
- Router + cutting router bit
- Scissors, knife or snips



Gasketing materials for fire doors intended for application to wood and plastic covered composite and wood core doors rated up to 1.5 hours. Listed steel frames and/or classified steel covered composite, hollow metal doors rated up to 3 hours.

INSTALLATION DETAIL

FACE-FIXED

STEP 1

Remove the seal from the packaging and check maximum cut back sizes. Remove the flexible cover strip.

STEP 2

Measure the distance between the door stops. At the opposite end to the actuator button, pull back the gasket and using a power/hack saw, cut the aluminium section to the measured length, less 8mm for end caps and clearance. Remove cutting swarf/debris. Push gasket back into position and cut to length with a sharp knife.

STEP 3

Fit the end cap to the actuator button end and position the seal at the bottom face of the door on the stop side of the door, button end tight up to the door stop and allowing a maximum 13mm gap (minimum 3mm) between the door bottom and the sill. Ensure the actuator button is on the hinge side.

STEP 4

Drill holes in aluminium housing, then pre-drill and screw fix to the door using screws provided. Cut the flexible cover strip to length and replace. Fit remaining end cap.

STEP 5 FOR TIMBER FRAMES

Position the striker button on the stop where the actuator button meets the door frame.

STEP 6

Open and close the door observing the operation of the seal. Adjust accordingly by winding the actuator button clockwise to reduce movement and anti-clockwise to increase the seal movement.

NOTE

For optimum results the seal should be adjusted so that the silicone gasket touches the sill in the final closing moment of the door.

SEMI-MORTISED

STEP 1

Remove the door from its hinges and cut a 48mm deep x 14mm wide rebate into the bottom of the door (on the side of the door the seal is to be positioned) and re hang the door.

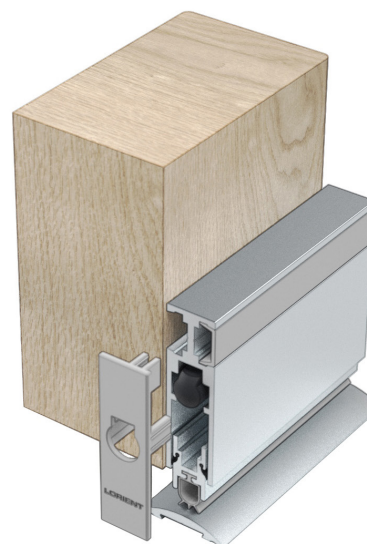
STEP 2

Measure the door width. Cut the seal to the door width, using the same principles as per the face- fixed installation details.

NOTE

Ensure that the installation of this product does not impede the opening or closing of the door. It is recommended to check the adjustment of the door seal periodically to ensure the door assembly to which it is fitted, closes and latches properly.

We recommend LAS8003 si drop seal be used together with a Lorient perimeter seal and, if required a threshold plate.



CUT BACK SIZES

Do not cut the seal shorter than the lengths indicated below or this will affect the normal operation of the internal mechanism.

335mm cuts to 255mm
435mm cuts to 335mm
535mm cuts to 435mm
635mm cuts to 535mm
735mm cuts to 635mm
835mm cuts to 735mm
935mm cuts to 835mm
1035mm cuts to 935mm
1135mm cuts to 1035mm
1235mm cuts to 1135mm

NOTE

Recommendations as to methods, use of materials and construction details are based on the experience and knowledge of Lorient and are given in good faith as a general guide and service to designers, contractors and manufacturers.

Lorient reserves the right to make alterations or delete any installation detail without prior notice.

V1



Lorient Southeast Asia Pte Ltd
9 Kallang Place #04-02
Singapore, 339154

+65 6270 1279
www.lorient.com.sg

All rights reserved. No part of this fitting guide may be reproduced, stored in a retrieval system, or transmitted in any means, electronic, mechanical, photocopying, recording or otherwise without the written permission of Lorient Polyproducts Limited.
© Lorient Polyproducts Ltd 2019

For more information please call:

+65 6270 1279