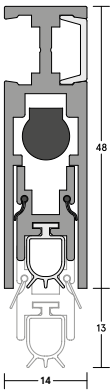


DROP SEALS

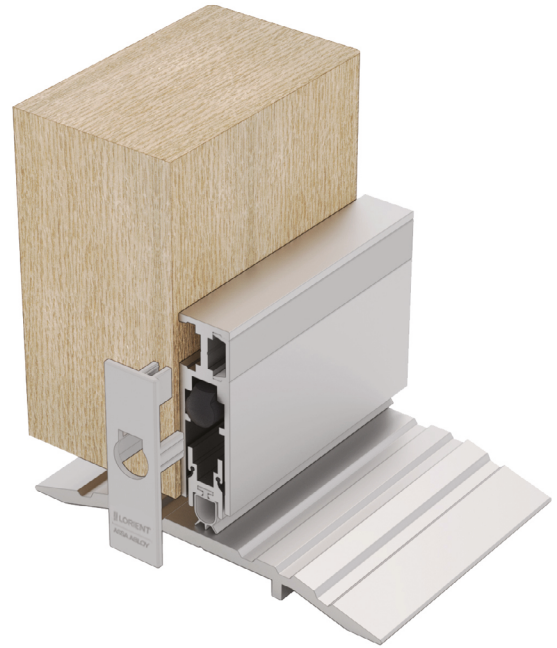
LAS8003 si

FACE-FIXED **33dB**

A slimline face-fixed automatic drop seal. It features a high efficiency mechanism, which lifts the seal clear of the floor as soon as the door is opened by a few millimetres; resulting in lower door operating forces. Surface mounted application suitable for upgrading existing doors. Requires no power connection. Self-levelling on uneven floors; seal height can be adjusted independently of fixing screws.



LAS8003 si



LAS8003 si (shown with LAS4100)

SYSTEM SPECIFICATIONS

Test evidence

- ▶ Smoke: BS 476-31.1:1983 at ambient temperature.
- ▶ Acoustic: BS EN ISO 10140-2: 2010 (up to Rw 33dB).

Characteristics

- ▶ Suitable for use on fire rated timber based door assemblies.
- ▶ Contributes towards sound, smoke, draught, and light containment.
- ▶ Suitable for wheeled traffic.

Location

- ▶ Single swing, single and double leaf doors.
- ▶ For use on both right and left handed doors.

Use with

- ▶ Any perimeter seal. Any threshold plate

Min/max gap size

- ▶ 1mm/13mm.

Seal material

- ▶ Grey silicone rubber.

Standard lengths

- ▶ 335mm, 435mm, 535mm, 635mm, 735mm, 835mm, 935mm, 1035mm, 1135mm and 1235mm.
- ▶ Note: Each length can be cut back to the next size down. The 335mm can be cut back to 255mm.

Fixing

- ▶ LAS8003 si is face-fixed onto the door bottom. Fixing screws are provided.

Adjustment

- ▶ Self-levelling on uneven surfaces. Can be adjusted independently of the fixing screws.
- ▶ Please note: Drop seals under 635mm are supplied with a single spring and will only operate once fully fitted and in use.

Finishes

- ▶ Silver anodised aluminium with grey end caps and grey silicone rubber gasket as standard.
- ▶ Other powder-coated colour finishes (non-standard - charges and lead times apply).
- ▶ Black end caps, and black silicone rubber gasket (non-standard - charges, MOQs and additional lead times).

Certification

certifire
(CF5179)



(R27972)