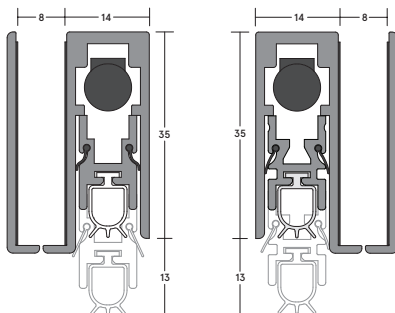


## DROP SEALS

# LAS8002G si

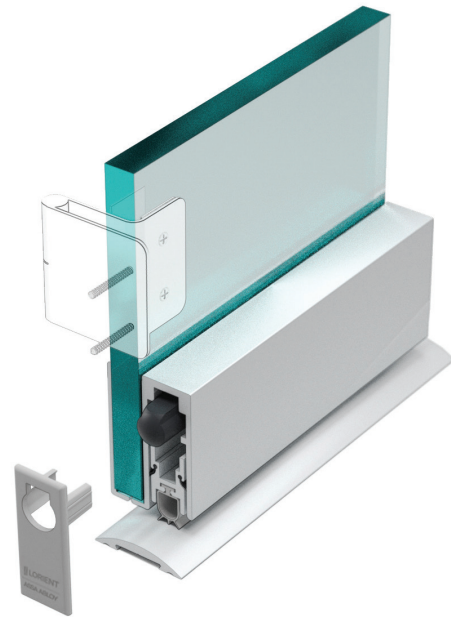
## FACE-FIXED

A slimline face-fixed drop seal suitable for glass doors – hinged into timber or aluminium frames. A smooth back plate creates a visual aesthetic. LAS8002G si features a high efficiency mechanism, which lifts the seal clear of the floor as soon as the door is opened by a few millimetres; resulting in lower door operating forces.



▲ LAS8002G si  
(right handed)

▲ LAS8002G si  
(left handed)



▲ LAS8002G si (shown with LAS4001)

## SYSTEM SPECIFICATIONS

### Characteristics

- ▶ Meets threshold sealing requirement of BS 8214:2016 section 12.3.
- ▶ Contributes towards sound, smoke, draught, and light containment.
- ▶ Suitable for wheeled traffic.

### Location

- ▶ Single swing doors.
- ▶ For use on both right and left handed doors.

### Use with

- ▶ Any perimeter seal. Any threshold plate.

### Min/max gap size

- ▶ 1mm/10mm.

### Seal material

- ▶ Grey silicone rubber.

### Standard lengths

- ▶ 335mm, 435mm, 535mm, 635mm, 735mm, 835mm, 935mm, 1035mm, 1135mm and 1235mm.
- ▶ Note: Each length can be cut back to the next size down. The 335mm can be cut back to 255mm.

### Fixing

- ▶ LAS8002G si carrier and back plate are face-fixed with strong adhesive tape.
- ▶ Fit end caps.
- ▶ This product is non-reversible and needs to be ordered left or right handed.

### Adjustment

- ▶ Self-levelling on uneven surfaces.

### Finishes

- ▶ Silver anodised aluminium with grey end caps and grey silicone rubber gasket as standard.
- ▶ Bronze anodised aluminium with black end caps and black silicone rubber gasket are subject to non-standard charges and additional lead times.
- ▶ Other powder-coated colour finishes (non-standard – charges and lead times apply).