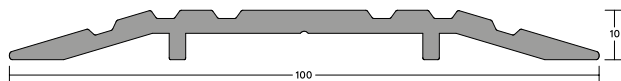
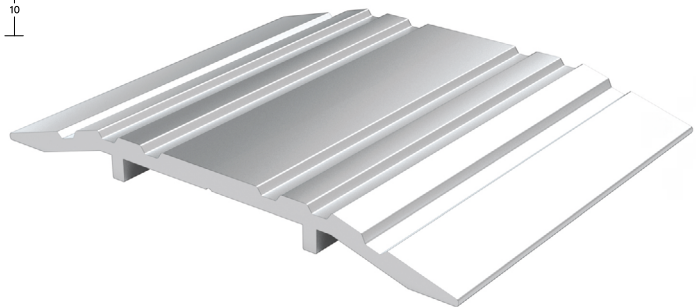


LAS4100

Durable, aluminium threshold plate, 10mm high. It can increase the effectiveness of threshold seals by creating a firmer gasket contact. Quick and easy installation.



LAS4100



SYSTEM SPECIFICATIONS

Characteristics

- ▶ Contributes towards smoke, weather, draught, and light containment when fitted with a suitable threshold seal.
- ▶ Provides an even surface underneath the door; suitable for wheeled traffic.

Location

- ▶ Single and double swing doors.

Use with

- ▶ Practically any drop or door bottom seal.

Material

- ▶ Aluminium.

Standard lengths

- ▶ 1m and 2.1m. Other lengths to special order.

Fixing

- ▶ Fixing screws are supplied.

Finishes

- ▶ Silver anodised aluminium as standard.
- ▶ Bronze anodised aluminium and other powder-coated colour finishes are subject to non-standard charges and additional lead times.