

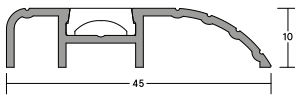
LAS4015

HEAVY DUTY

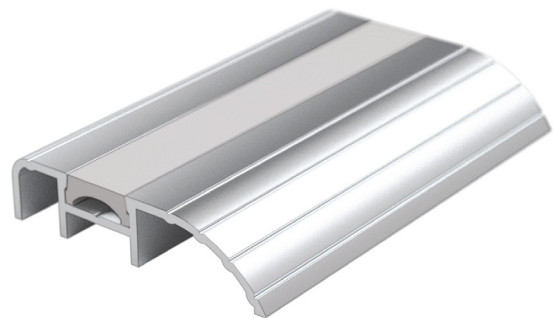
Heavy duty, aluminium threshold plate suitable for outward opening doors to prevent rain, draught and light. Can increase the effectiveness of threshold seals by creating a firmer gasket contact. Durable anodised aesthetic finish.



THRESHOLD PLATES + RAMPS



LAS4015



SYSTEM SPECIFICATIONS

Performance

- ▶ Protects against sound, smoke, weather, draught, light and insects when fitted with a suitable threshold seal.
- ▶ Provides an even surface underneath the door; suitable for wheeled traffic.

Location

- ▶ Single and double leaf outward opening doors.

Use with

- ▶ Practically any drop or door bottom seal.

Material

- ▶ Aluminium and PVC cover strip.

Standard lengths

- ▶ 1m and 2.1m. Other lengths to special order.

Fixing

- ▶ Fixing screws are supplied.

Finishes

- ▶ Silver anodised aluminium as standard.
- ▶ Bronze anodised aluminium and other powder-coated colour finishes are subject to non-standard charges and additional lead times.

Certification



(R27972)