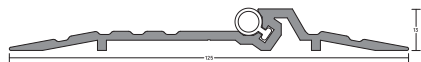


# LAS4014 SI THRESHOLD PLATE

## FITTING GUIDE



LENGTH \_\_\_\_\_

### CONTENTS

- LAS4014 si threshold plate
- Stainless steel screws and plugs

### TOOLS REQUIRED

- Tape measure
- Pencil or marker
- Knife
- Saw, hand or power
- Power drill
- 4.5mm drill bit
- 6mm masonry bit
- Countersink
- Construction adhesive

## INSTALLATION DETAIL

### NOTE

It is not necessary to remove the door from its hinges.

### STEP 1

Remove the plate from the packaging and measure the door width, between jambs or door stops to determine plate length required.

### STEP 2

Measure the threshold plate and mark the desired length (and profile if cutting around the door stop) with a pencil.

### STEP 3

Pull back the silicone gasket and cut the threshold plate to length using a saw. Replace the silicone gasket and trim to length with a knife.

### STEP 4

Position the plate on the door sill in required location, ensuring the bottom edge of the door is butted up against the rubber bulb seal.

### STEP 5: SCREW FIX

Using a power drill with a 4.5mm drill bit, create fixing holes in the plate at the required positions, countersink to ensure flush screw heads. With the plate in position, mark hole centres on floor.

Using masonry drill, create fixing holes. Clean away dust and insert supplied plastic plugs.

Screw fix the threshold in place using the screws & plugs supplied.

### STEP 5: ADHESIVE FIX

Apply adhesive to the back of the threshold plate and place it in the desired position.

### NOTE

Where the threshold plate meets the door stop, sealant may be applied to prevent water ingress.

### STEP 6

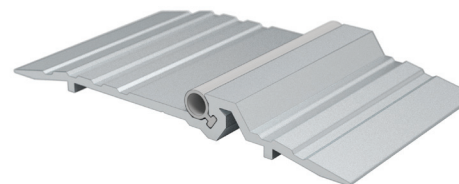
Check to ensure the door opens and closes without the need for excessive force.

### NOTE

For effective operation, the LAS4014 threshold plate requires a minimum of 9mm clearance between the door and the floor.

### NOTE

**Ensure that the installation of this product does not impede the opening or closing of the door. It is recommended to check the door periodically to ensure the door closes and latches properly.**



### NOTE

Recommendations as to methods, use of materials and construction details are based on the experience and knowledge of Lorient and are given in good faith as a general guide and service to designers, contractors and manufacturers.

Lorient reserves the right to make alterations or delete any installation detail without prior notice.



Gasketing materials for fire doors intended for application to wood and plastic covered composite and wood core doors rated up to 1.5 hours and listed steel frames and/or classified steel covered composite, hollow metal doors rated up to 3 hours.

V1