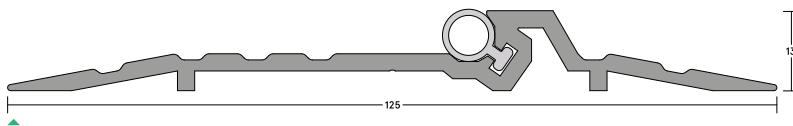


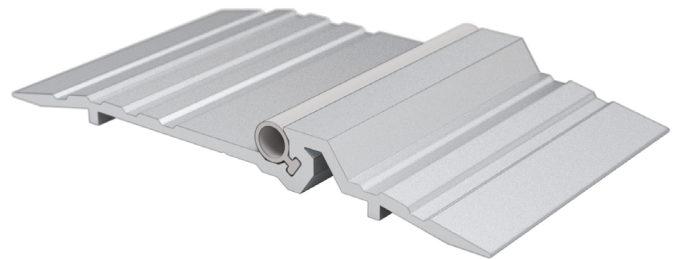
LAS4014 si

42dB

The LAS4014 si threshold plate is a robust, aluminium threshold solution, suitable for use on fire-rated steel doorsets. Featuring a high-performance silicone compression seal, the LAS4014 helps prevent the penetration of rain, draughts, light, and noise, enhancing the comfort and protection of interior spaces. Its stepped design increases the effectiveness of threshold seals by creating a firmer gasket contact, while the durable anodised finish provides a sleek and resilient aesthetic.



LAS4014 si



SYSTEM SPECIFICATIONS

Test evidence

- ▶ Smoke: BS 476-31.1: 1983 at ambient temperature.
- ▶ Acoustic: BS EN ISO 10140-2: 2010 (up to Rw 42dB).
- ▶ Durability: 100,000 cycles.

Characteristics

- ▶ Suitable for use of fire rated steel doorsets.
- ▶ Meets smoke requirement: BS 8214:2016.
- ▶ Contributes towards smoke, weather, draught, and light containment when fitted with a suitable threshold seal.
- ▶ Provides an even surface underneath the door; suitable for wheeled traffic.

Location

- ▶ Single and double leaf outward opening doors.

Use with

- ▶ Practically any drop or door bottom seal.

Material

- ▶ Aluminium and silicone gasket.

Standard lengths

- ▶ 1m and 2.1m. Other lengths to special order.

Fixing

- ▶ Fixing screws are supplied.

Finishes

- ▶ Silver anodised aluminium with grey silicone rubber gasket as standard.
- ▶ Bronze anodised aluminium with black silicone rubber gasket are subject to non-standard charges and additional lead times.

- ▶ Other powder-coated colour finishes (non-standard - charges and lead times apply).

Certification

certifire
(CF5179)

