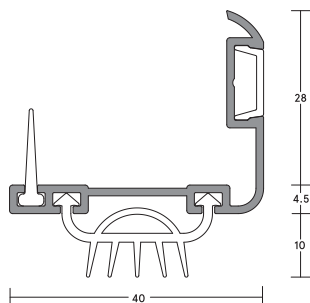


# LAS3010 SI DOOR BOTTOM SEAL

## FITTING GUIDE



LENGTH \_\_\_\_\_

### CONTENTS

- LAS3010 si door bottom seal
- Bag of screws

### TOOLS REQUIRED

- Tape measure
- Pencil or marker
- Knife
- Saw, hand or power
- Drill, hand or power
- 2.5mm drill bit
- Screwdriver

### NOTE

Lorient reserves the right to make alterations or delete any installation detail without prior notice.

## INSTALLATION DETAIL

### INWARD OPENING DOORS

#### NOTE

The LAS3010 si must be fitted to the inside face of the door. This seal is designed for threshold gaps of 16mm - 20mm. If the door needs to be trimmed follow steps 1 & 2, if not, move to step 3.

#### STEP 1

Along the bottom of the door, mark a line 16mm up and parallel from the door sill.

#### STEP 2

Remove door and saw along cut line. The door will need to be sanded and painted to prevent weather ingress. Re-hang once dry.

#### STEP 3

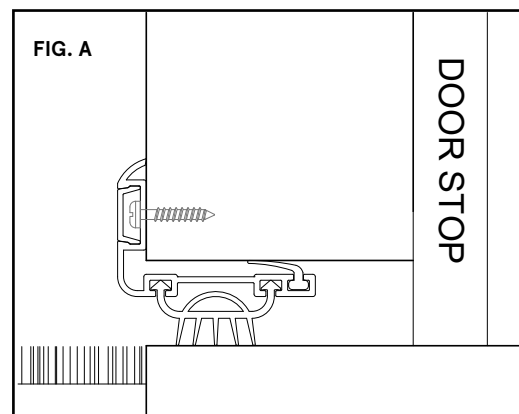
Measure the door width. Slide back silicone gaskets and using a fine-tooth hacksaw, cut the holder and cover strip to the required length. Slide silicone gasket back into position and trim to suit with knife.

#### STEP 4

Remove cover strip.

#### STEP 5

Position the seal to ensure the gasket makes contact with the threshold and mark out the slotted hole locations.



#### STEP 6

Drill pilot holes with a 2.5mm drill bit (if required). Lightly screw fix the length to the door bottom through the slotted holes with the screws supplied.

#### STEP 7

Close the door and check for a uniform seal, adjust the seal if required. Tighten screws and replace the decorative cover strip.

**We recommend LAS3010 si door bottom seal is used together with a LAS4016 threshold plate.**

#### NOTE

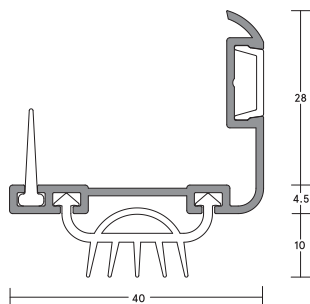
Ensure that the installation of this product does not impede the opening or closing of the door. It is recommended to check the adjustment of the door seal periodically to ensure the door assembly to which it is fitted, closes and latches properly.



V1

## LAS3010 SI DOOR BOTTOM SEAL

### FITTING GUIDE



LENGTH \_\_\_\_\_

#### CONTENTS

- LAS3010 si door bottom seal
- Bag of screws

#### TOOLS REQUIRED

- Tape measure
- Pencil or marker
- Knife
- Saw, hand or power
- Drill, hand or power
- 2.5mm drill bit
- Screwdriver

#### NOTE

Lorient reserves the right to make alterations or delete any installation detail without prior notice.

### OUTWARD OPENING DOORS

#### NOTE

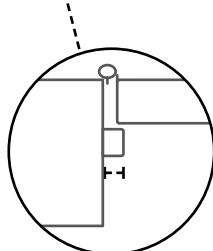
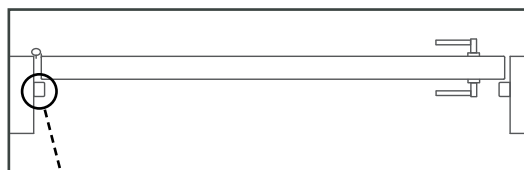
The LAS3010 si must be fitted to the inside face of the door. This seal is designed for threshold gaps of 16mm - 20mm. If the door needs to be trimmed follow steps 1 & 2, if not, move to step 3.

#### STEP 1

Along the bottom of the door, mark a line 16mm up and parallel from the door sill.

#### STEP 2

Remove door and saw along cut line. The door will need to be sanded and painted to prevent weather ingress. Re-hang once dry.



DOOR STOP DEPTH (Y)

#### STEP 3

Measure the width of the door to get the full seal length.

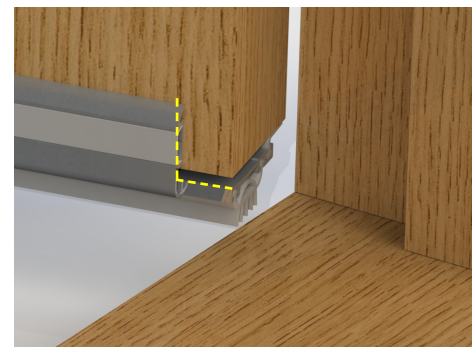
Slide back silicone gaskets and using a fine-tooth hacksaw, cut the holder and cover strip to the required length.

Slide silicone gasket back into position and trim to suit with knife.

#### STEP 4

Allowing for the thickness of the door stops, cut out aluminium sections from both ends of the upstand as shown in Fig. 1.

Trim cover strip to suit.



#### STEP 5

Position the seal to ensure the gasket makes contact with the threshold and mark out the slotted hole locations.

#### STEP 6

Drill pilot holes with a 2.5mm drill bit (if required). Lightly screw fix the length to the door bottom through the slotted holes with the screws supplied.

#### STEP 7

Close the door and check for a uniform seal, adjust the seal if required. Tighten screws and replace the decorative cover strip.

#### NOTE

**We recommend LAS3010 si door bottom seal is used together with a LAS4016 threshold plate.**

#### NOTE

**Ensure that the installation of this product does not impede the opening or closing of the door. It is recommended to check the adjustment of the door seal periodically to ensure the door assembly to which it is fitted, closes and latches properly.**



V1