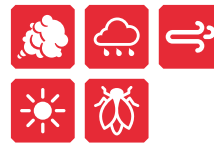


DOOR BOTTOM SEALS

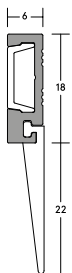
LAS3004 si

HEAVY DUTY

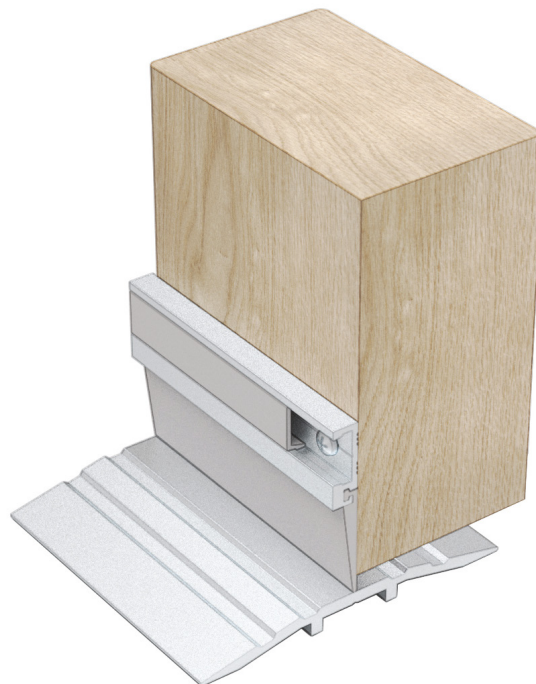
A heavy duty, blade-type door bottom seal for easy face-fixed installations. Slimline aesthetic design with flexible cover strip to conceal fixings. It can easily accommodate a range of larger threshold gap sizes. Hard wearing and durable seal.



DOOR BOTTOM SEALS



LAS3004 si



LAS3004 si (shown with LAS4010)

SYSTEM SPECIFICATIONS

Performance

- ▶ Protects against smoke, weather, draught, light and insects when fitted with a suitable threshold seal.

Location

- ▶ Single and double leaf doors.
- ▶ Up and over garage doors.
- ▶ Roller shutter doors.

Use with

- ▶ Practically any threshold plate.

Min/max gap size

- ▶ 10mm/22mm.

Seal material

- ▶ Flexible silicone rubber.

Standard lengths

- ▶ 1m and 2.1m. Other lengths to special order.

Fixing

- ▶ Self-tapping wood screws are supplied (self-drilling and self-tapping screws for metal construction available on request).
- ▶ Fixing holes are pre-drilled and slotted to allow the seals to be adjusted and positioned accurately.

Finishes

- ▶ Silver anodised aluminium with grey cover strip and grey silicone rubber blade as standard.
- ▶ Bronze anodised aluminium with black cover strip and black silicone rubber blade are subject to non-standard charges and additional lead times.