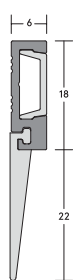


## DOOR BOTTOM SEALS

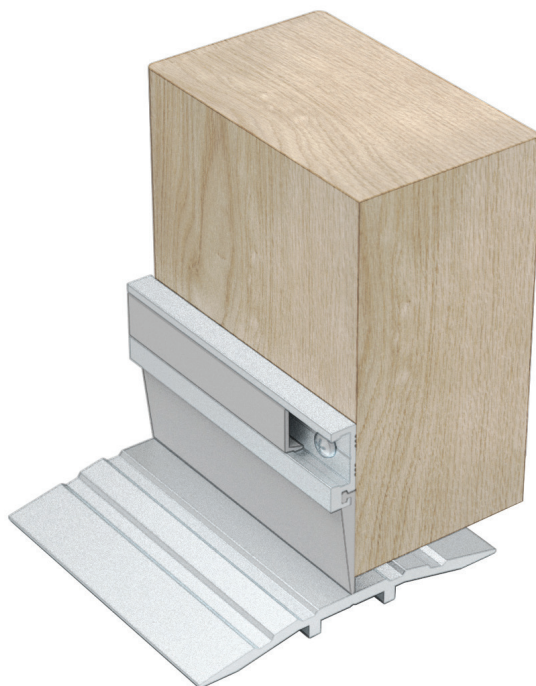
# LAS3004 si

## FACE-FIXED

The LAS3004 si door bottom seal is a versatile, blade-type seal designed for straightforward, face-fixed installations, making it ideal for both new builds and retrofit applications. With its slimline aesthetic and flexible cover strip to neatly conceal fixings, the LAS3004 provides a discreet, professional finish. Its robust design accommodates larger threshold gap sizes and ensures long-lasting performance, and can contribute to the effective containment of smoke, draughts, light, and weather, creating a comfortable indoor environment.



LAS3004 si



LAS3004 si (shown with LAS4010)

## SYSTEM SPECIFICATIONS

### Characteristics

- ▶ Contributes towards smoke, weather, draught, and light containment when fitted with a suitable threshold seal.

### Location

- ▶ Single and double leaf doors.
- ▶ Up and over garage doors.
- ▶ Roller shutter doors.

### Use with

- ▶ Practically any threshold plate.

### Min/max gap size

- ▶ 10mm/22mm.

### Seal material

- ▶ Flexible silicone rubber.

### Standard lengths

- ▶ 1m and 2.1m. Other lengths to special order.

### Fixing

- ▶ Self-tapping wood screws are supplied (self-drilling and self-tapping screws for metal construction available on request).
- ▶ Fixing holes are pre-drilled and slotted to allow the seals to be adjusted and positioned accurately.

### Finishes

- ▶ Silver anodised aluminium with grey cover strip and grey silicone rubber blade.