

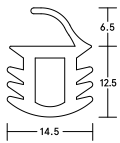
COMPRESSION SEALS

LAS1050

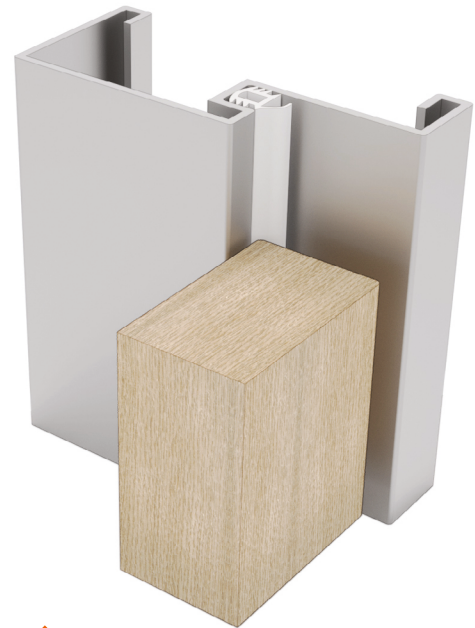
KERF-FIT

45dB

Durable, silicone compression seal for acoustic performance. Seal push fits quickly and easily into a 12mm wide x 12mm deep groove. No mechanical fixings/screws required.



▲ LAS1050



▲ LAS1050

SYSTEM SPECIFICATIONS

Test evidence

- ▶ Acoustic: BS EN ISO 10140-2: 2010 (up to Rw 45dB).

Characteristics

- ▶ Contributes towards sound, weather, draught, and light containment.

Location

- ▶ Head and jambs of single swing doors.

Use with

- ▶ Practically any threshold seal.

Min/max gap size

- ▶ 2mm/4mm.

Seal material

- ▶ Flexible silicone rubber.

Standard lengths

- ▶ 100m reels.
- ▶ Subject to MOQs.

Fixing

- ▶ Interference fit into 12mm x 12mm preformed steel door frame rebate.

Colours

- ▶ Dark grey or black (non-UL).

Certification



(R27972)