

## COMPRESSION SEALS

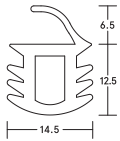
# LAS1050

MEDIUM DUTY **45dB**

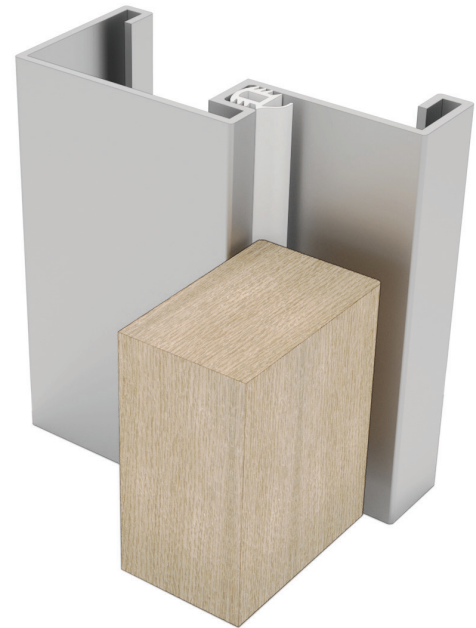
Durable, silicone compression seal for acoustic performance. Seal push fits quickly and easily into a 12mm wide x 12mm deep groove. No mechanical fixings/screws required.



COMPRESSION SEALS



▲ LAS1050



### SYSTEM SPECIFICATIONS

#### Test evidence

- ▶ Acoustic: BS EN ISO 10140-2: 2010 (up to  $R_w$  45dB).

#### Performance

- ▶ Protects against sound, draught and light.

#### Location

- ▶ Head and jambs of single swing doors.

#### Use with

- ▶ Practically any threshold seal.

#### Min/max gap size

- ▶ 2mm/4mm.

#### Seal material

- ▶ Flexible silicone rubber.

#### Standard lengths

- ▶ 100m reels.

#### Fixing

- ▶ Interference fit into 12mm x 12mm preformed steel door frame rebate.

#### Colours

- ▶ White, grey, dark brown or black.