

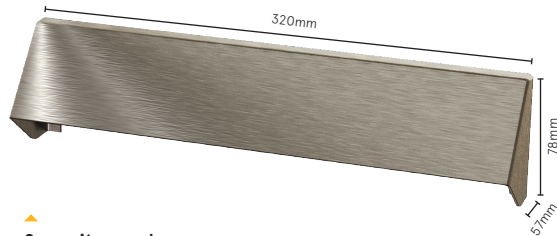
## LETTERPLATES

# HIGH PERFORMANCE LETTERPLATE

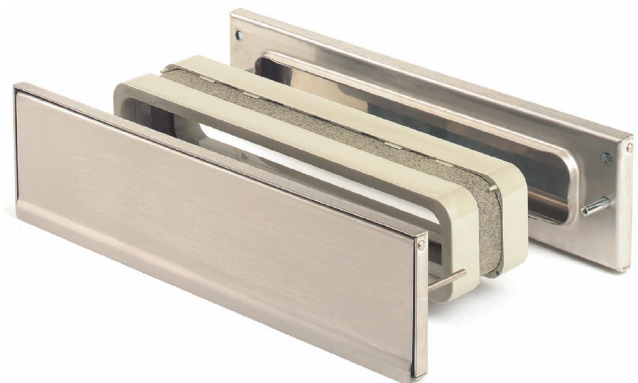
The high performance letterplate provides in excess of 60 minutes fire resistance and protection against cold smoke in line with BS 9999. It is internally sealed so that the unit will not compromise the smoke integrity of the door whilst also providing draught proofing. Available with a range of security devices.



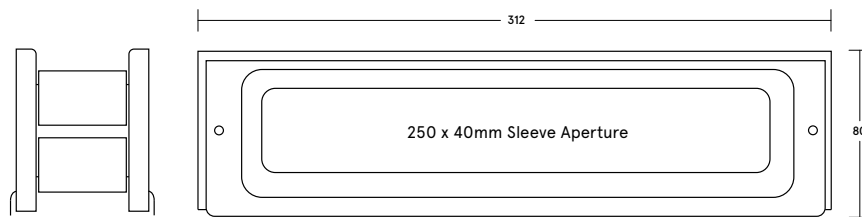
FIRE RESISTANT DOOR HARDWARE



▲ Security cowl LP10



▲ High performance fire, smoke + security letterplate



### SYSTEM SPECIFICATIONS

#### Test evidence

- ▶ Fire: BS 476-22:1987.
- ▶ Fire: BS 476-31-1:1983.
- ▶ Durability: 15,000 cycles.

#### Performance

- ▶ Can provide 30 and 60 minutes fire resistance.
- ▶ Can provide protection against cold smoke in line with the requirements of BS 9999:2017 and Approved Document B when specified as part of a smoke controlled unit.

#### Size

- ▶ 312mm x 80mm.

#### Door Aperture Size

- ▶ 270mm x 60mm.

#### Door thickness

- ▶ 42mm - 47mm: RJ 8042F + RJ 8042S.
- ▶ 47mm - 52mm: RJ 8047F + RJ 8047S.
- ▶ 52mm - 57mm: RJ 8052F + RJ 8052S.

#### Seal material

- ▶ Graphite intumescent liner.

#### Can be used with

- ▶ Security cowl: LP10.
- ▶ Internal security latch: LP11.
- ▶ Lockable post-box: LP12.

#### Finishes

- ▶ FD30: Silver or gold anodised as standard. Other powder coated finishes (non-standard charge and lead times apply).
- ▶ FD60: Brushed, satin or polished stainless steel as standard. Other finishes are available to special order, please contact us for more information (non-standard charge and lead times apply).
- ▶ **Note:** Powder coated steel is for internal use only.

#### Accreditation

**certifire**  
(CF255)