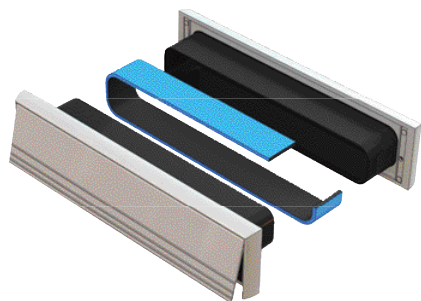


FIREMASTER P207 LETTERPLATE FITTING GUIDE

certifire
(CF291)



INSTALLATION DETAIL

STEP 1

Mark off aperture position for the letterplate at a minimum of 250mm and a maximum of 1700mm from the base of the door. Dimension from middle of aperture.

STEP 2

Cut out aperture with jig saw or router etc, to suit letterplate sleeve.

NOTE

This must be a push fit on all sides of sleeve.

STEP 3

Fix letterplate using fixing screws supplied, with the brushes under the internal flap, on the inside of the room.



V1