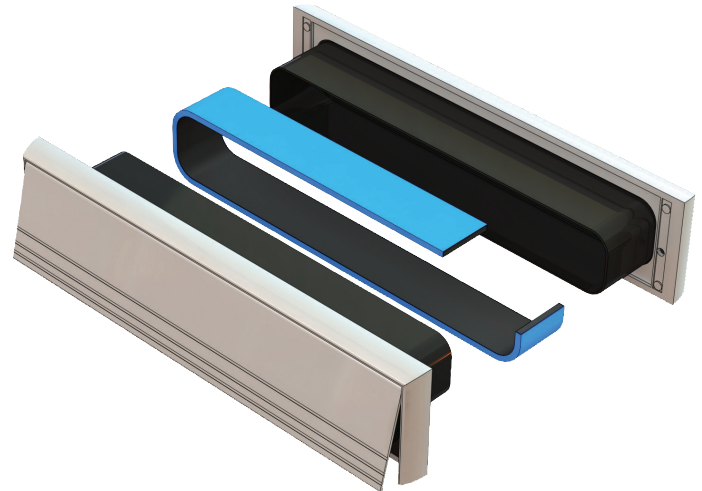


## LETTERPLATES

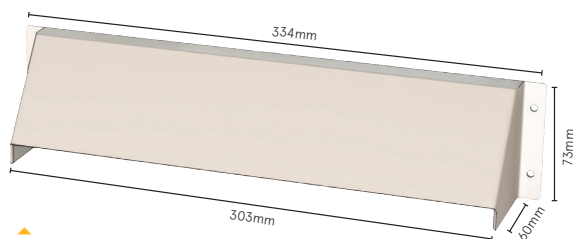
# FIREMASTER FIRE + SMOKE RESISTANT LETTERPLATE

32dB

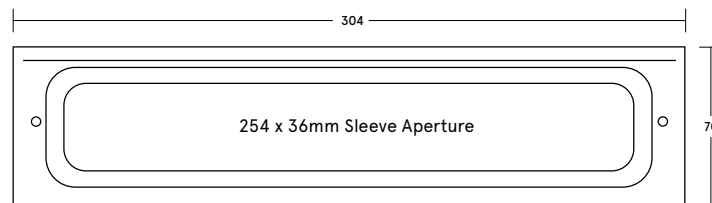
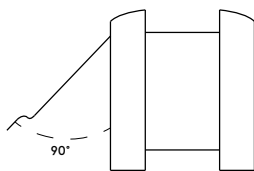
The Firemaster letterplate provides in excess of 30 minutes fire resistance and protection against cold smoke in line with BS 9999. It features a telescopic intumescent liner, making it suitable for a range of door thicknesses. A robust aluminium construction and nylon brush seals prevent vision through the letterplate, whilst also providing draught proofing.



FIRE RESISTANT DOOR HARDWARE



Security cowl  
RJ 290X063C



Firemaster fire + smoke resistant letterplate  
RJS 29063

### SYSTEM SPECIFICATIONS

#### Test evidence

- ▶ Fire: BS 476-20/22:1987.
- ▶ Smoke: BS 476-31.1:1983.
- ▶ Acoustic: BS EN ISO 717-1:2013 (up to Rw 32dB).
- ▶ Durability: 15,000 cycles.

#### Performance

- ▶ Can provide 30 minutes fire resistance.
- ▶ Provides protection against cold smoke in line with the requirements of BS 9999:2017 and Approved Document B.

#### Overall Size

- ▶ 304mm x 70mm.

#### Door thickness

- ▶ 40mm min.
- ▶ 70mm max.

#### Door aperture size

- ▶ 285mm x 55mm.

#### Seal material

- ▶ Graphite intumescent liner.

#### Finishes

- ▶ Silver anodised, polished silver or polished gold aluminium.

#### Use with

- ▶ A security cowl is available to prevent vision through the letterplate when open, and to inhibit manipulation of locks/bolts, tampering and attack from outside.

#### Accreditation

**certifire**  
(CF219)