

LETTERPLATES

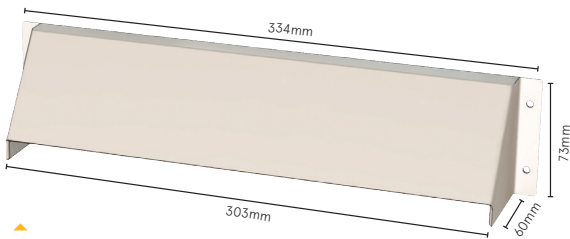
FIREMASTER FIRE + SMOKE RESISTANT LETTERPLATE

32dB

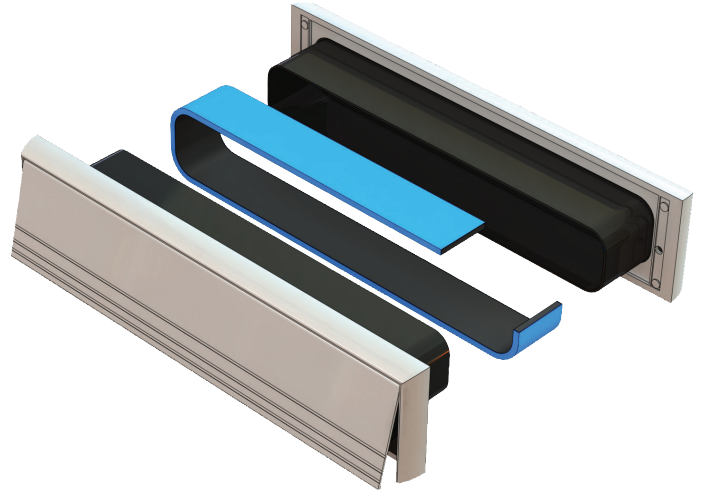
The Firemaster letterplate provides in excess of 30 minutes fire resistance and protection against cold smoke in line with BS 9999. It features a telescopic intumescent liner, making it suitable for a range of door thicknesses. A robust aluminium construction and nylon brush seals prevent vision through the letterplate, whilst also providing draught proofing.



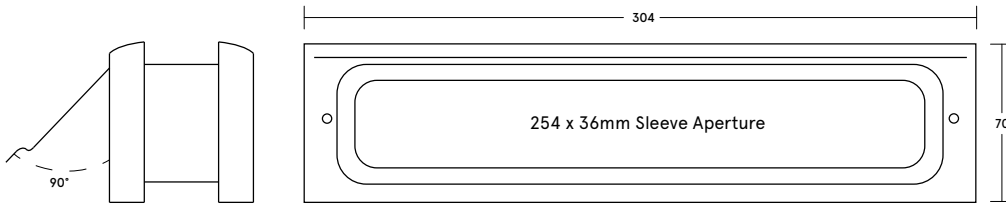
FIRE RESISTANT DOOR HARDWARE



Security cowl
RJ 290X063C



Firemaster fire + smoke resistant letterplate
RJS 29063



SYSTEM SPECIFICATIONS

Test evidence

- ▶ Fire: BS 476-20/22:1987.
- ▶ Smoke: BS 476-31.1:1983.
- ▶ Acoustic: BS EN ISO 717-1:2013 (up to Rw 32dB).
- ▶ Durability: 15,000 cycles.

Performance

- ▶ Can provide 30 minutes fire resistance.
- ▶ Provides protection against cold smoke in line with the requirements of BS 9999:2017 and Approved Document B.

Overall Size

- ▶ 304mm x 70mm.

Door thickness

- ▶ 40mm min.
- ▶ 70mm max.

Door aperture size

- ▶ 285mm x 55mm.

Seal material

- ▶ Graphite intumescent liner.

Finishes

- ▶ Silver anodised, polished silver or polished gold aluminium.

Use with

- ▶ A security cowl is available to prevent vision through the letterplate when open, and to inhibit manipulation of locks/bolts, tampering and attack from outside.

Accreditation

certifire
(CF219)