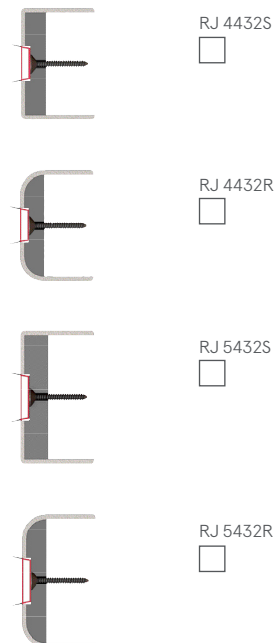


DOOR EDGE PROTECTOR FITTING GUIDE



CONTENTS

- Door Edge Protector

TOOLS REQUIRED

- Pencil or marker
- Circular or plunge saw
- Tenon saw
- Drill
- 4.5mm drill bit
- Countersink

For more information please call:

+44 (0)1626 834252

INSTALLATION DETAIL

STEP 1

Remove existing doors and take off all ironmongery, door plates, intumescent fire/smoke seals.

STEP 2

Reduce the damaged door edge by 11mm using a circular/plunge saw.

NOTE

It is not necessary to re-lip the edge of the door core as this will be replaced by the toughened PVC inner core of the door edge protector, unless the fire door supporting document specifies otherwise.

STEP 3

Position the edge protector and mark the overall length and any cut outs for locks, keeps, shoot bolts etc. Use a tenon saw when cutting to length and a hand held router for the necessary cut outs.

STEP 4

Secure the edge protector to the door core using 50mm long, No. 8 steel, countersunk screws in the rebated central groove at 150mm from each end and at maximum 200mm centres between fixings.

STEP 5

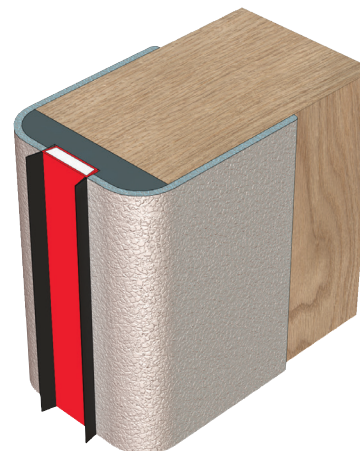
Refit all ironmongery and insert the intumescent fire/smoke seals in the rebate.

NOTE

When the door edge protectors are fitted the gap between them (opposing edge protector with plain fire seal) needs to be 3-4mm, as is standard for all Lorient acoustic, smoke and fire seals.

STEP 5

Rehang the doors.



V1