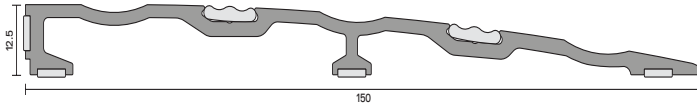
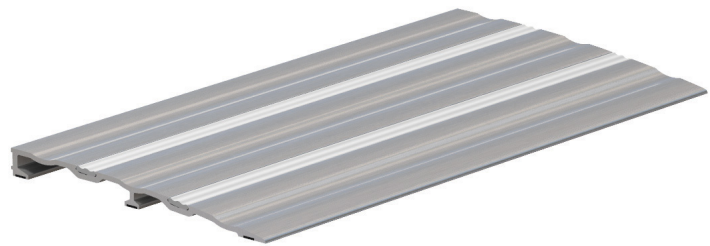


# AAS4552

A 150mm wide threshold ramp for use in buildings where wheelchairs and trolleys are used, or to compensate for uneven floors. Reversible tread strips provide greater traction. Unique 'scoops' further enhance grip for foot or wheeled traffic.



AAS4552



AAS4552

## SYSTEM SPECIFICATIONS

### Characteristics

- ▶ Contributes towards smoke, weather, draught, and light containment when fitted with a suitable threshold seal.
- ▶ Provides an even surface underneath the door; suitable for wheeled traffic.
- ▶ Provides an even surface underneath the door; suitable for wheeled traffic.

### Location

- ▶ Single and double swing doors.

### Use with

- ▶ Practically any drop or door bottom seal.

### Material

- ▶ Aluminium with two flexible tread strips.

### Standard lengths

- ▶ 1m and 2.1m. Other lengths to special order.

### Fixing

- ▶ Pre-drilled and countersunk
- ▶ Fixing screws are supplied.
- ▶ Tread strips supplied and push-fit into plate to conceal fixings

### Finishes

- ▶ Silver anodised aluminium with grey tread strips as standard.
- ▶ Bronze anodised aluminium with black tread strips and other powder-coated colour finishes are subject to non-standard charges and additional lead times.

### Certification



(R27972)