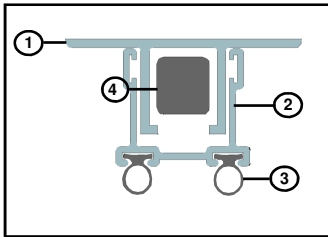


IS8110si

Fitting Instruction

Automatic Door Bottom Seal



Length:

For Hollow Metal Doors having 19mm deep channel along the bottom edge.

DESCRIPTION OF CONTENTS

- Aluminium Housing (1)
- Aluminium Carrier (2)
- Silicone Gasket (3)
- Actuator Button (4)
- Fixing Screws (self drilling)
- Fitting Instructions

TOOLS REQUIRED FOR INSTALLATION

- Tape Measure
- Saw (power or hand)
- Screw Driver
- 2.5mm Drill bit
- 13mm Drill bit
- Drill (power or hand)
- Knife
- Pencil or Marker

INSTALLATION DETAIL

STEP 1

Remove the seal from the packaging .

STEP 2

Remove the door from its hinges, lay on side and firmly restrain.

STEP 3

WARNING: Check maximum cut-back lengths on the table provided.

Measure the door bottom channel. Pull back the gaskets from the **opposite** end to the actuator button and using a power saw/hacksaw, cut aluminium sections to the measured length removing an additional 2.5mm to ensure a good fit. Remove cutting swarf.

Push the gasket back into position and cut with a sharp knife.

STEP 4

Measure seal location and mark the position of the actuator button on the hinged side of the door. Drill a 13mm diameter hole to allow the actuator button to protrude through the door edge

STEP 5

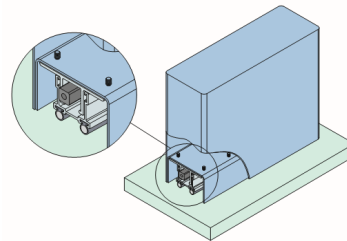
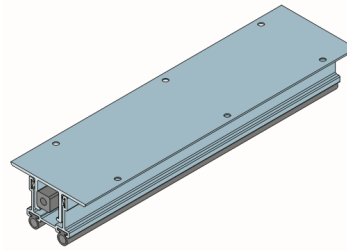
Using the fixing screws provided screw fix the seal in position.

STEP 6

When the door leaf is re-fitted open and close the door observing the operation of the seal. Adjust accordingly by pulling out the actuator button clear of the door edge. Firmly holding the threaded rod, turn the actuator button clockwise to reduce movement and anticlockwise to increase the seal movement.

(For timber frames, fix the striker button to the frame opposite the actuator button.)

NOTE: For optimum results the seal should be adjusted so that the seals silicone gasket touches the sill in the final closing moment of the door.



NOTE: Maximum seal drop is 12mm

IMPORTANT – Ensure that the installation of this product does not impede the opening or closing of the door. It is recommended to check the adjustment of the door seal periodically to ensure the door assembly to which it is fitted, closes and latches properly.

OTHER INTEGRITY™ ARCHITECTURAL SEALS INCLUDE:

- Door Perimeter Seals
- Door Bottom Seals
- Automatic Door Bottom Seals
- Threshold Plates
- Brush Seals
- Magnetic Seals

Contact your nearest Lorient office for further details.

NOTE

Recommendations as to methods for use of materials and construction details are based on the experience and knowledge of Lorient and are given in good faith as a general guide and service to designers, contractors and manufacturers.

Lorient reserves the right to make alterations or delete any installation detail without prior notice.

CUT BACK SIZES

Do not cut the seal shorter than the lengths indicated below or this will affect the normal operation of the internal mechanism.

335mm	cuts to	255mm
435mm	cuts to	336mm
535mm	cuts to	436mm
635mm	cuts to	536mm
735mm	cuts to	636mm
835mm	cuts to	736mm
935mm	cuts to	836mm
1035mm	cuts to	936mm
1135mm	cuts to	1036mm

AUSTRALIA
Lorient Australia
Tel 1300 858 010

ASIA PACIFIC
Lorient Pacific Limited Hong Kong
Tel: (+852) 2505 0328

EUROPE
Lorient Polyproducts Ltd UK
Tel: (+44) 1626 834252

MIDDLE EAST
Lorient Middle East Building Materials Trading LLC Dubai
Tel (+971) 4267 4339
Fax (+971) 4267 5339